

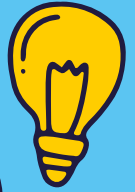


COLEG  
CAMBRIA

2026 ENTRY



**YOUR**



**FUTURE**

**STARTS**

**HERE**



WWW.CAMBRIA.AC.UK | 0300 30 30 007

# CONTENTS

## **Cambria Information**

Principal's Welcome	03
Parents, Carers & Guardians	04
Which Level of Study is Best for Me?	05
How to Apply	06
Level 3 Learning	07
Foundation Learning	08
English and Maths (GCSE Resits)	09
Supporting You	10
Learn in Welsh	16
Libraries & Academic Skills Support	18
Learner Experience	19
Elite Sport	20
Advanced Skills Baccalaureate Wales	21
What Can I Study?	22
Create Your Future	25
Apprenticeships	54
Jobs Growth Wales+	56
Cambria University Centre	100
Virtual Site Tours	103
Find Us	<b>back cover</b>



## **A Levels**

Welcome to A Levels	26
Our Sites & Facilities	28
Hear from our Students	30
A Level Courses	31



## **Practical Courses**

Welcome to Practical Courses	49
Our Sites & Facilities	51
Hear from our Students	58
Access to Higher Education (HE)	60
Beauty, Spa & Complementary Therapies	61
Business, Management & Leadership	62
Childcare, Childhood Studies & Playwork	63
Construction - Building Services	64
Construction - Technical	65
Construction - Trades	66
Creative Industries - Art & Design	67
Creative Industries - Creative Media Production	68
Creative Industries - Music Performance & Production	69
Creative Industries - Performing Arts & Backstage Theatre Production	70
Digital Technologies, Computing & IT	71
Engineering - Fabrication & Welding	72
Engineering - Manufacturing & Maintenance	73
Engineering - Motor Vehicle	74
Sports	75
Fashion Communication, Business and Marketing	76
Floristry	77
Hairdressing & Barbering	78
Health & Social Care	79
Hospitality & Catering	80
Independent Living Skills	81
Learn English	82
Neurodiverse-centred Courses	83
Science - Forensic & Criminal Investigation	84
Sport & Fitness	85
Step into Cambria	86
Travel & The Visitor Economy	87
Uniformed Public Services	88

## **Land-based Courses**

Welcome to Land-based Courses	89
Agricultural Engineering	92
AGCO Diploma Training Scheme	93
Kubota Diploma Training Scheme	94
Agriculture & Precision Agriculture	95
Forestry & The Countryside	96
Welcome to Northop	97
Animal Care & Management	99

# PRINCIPAL'S WELCOME



**We're delighted that you're considering joining us in September 2026!**

At Coleg Cambria, we're proud to be recognised for our innovation, inclusive approach and commitment to helping every learner achieve their full potential.

We know moving from high school to college can feel daunting, but rest assured, we'll be with you every step of the way. From your first day, you'll be supported by expert tutors, dedicated in-class teams and your own Progress Coach. All in place to ensure you thrive at Cambria.

Support at Cambria goes beyond the classroom. Our health and wellbeing team, resilience coaches and pastoral staff are on hand to make sure you have everything you need to stay focused, happy and confident throughout your studies.

You'll also be encouraged to get involved! From free fitness and wellbeing sessions through our Active Cambria programme to student clubs, societies and the Student Voice initiative where you can share your ideas and make a difference to college life.

At Cambria, everything we do is built on mutual respect, inclusivity and positive behaviours - values that shape both our college community and your future.

Our goal is simple: to help you gain the skills, confidence and qualifications to move on to university, an apprenticeship or the fulfilling career you've always wanted.

We look forward to welcoming you to Coleg Cambria.



**Sue Price**  
Principal

## 2025/26 OPEN EVENTS



**Open events will take place throughout the year**

**Tap or click here for times and dates**



**studentservices@[cambria.ac.uk](mailto:studentservices@cambria.ac.uk)**

**0300 30 30 007 | [www.cambria.ac.uk](http://www.cambria.ac.uk)**

# PARENTS, CARERS AND GUARDIANS

**At Cambria, we are committed to building strong links with parents, carers and guardians to support your young person throughout their time at college.**

Your young person will be encouraged to reach their full potential, increasing their confidence and providing them with real experiences to ensure when they leave they are ready for their next step. Students study in excellent facilities, using the latest technology taught by expert staff. We will support your young person to gain the right skills and qualifications to prepare them for life after college.

Our relationship with students includes you as their parent, carer or guardian. We will regularly communicate with you via reports and parents' evenings to keep you informed of your young person's progress. Each student will be supported with a Progress Coach to ensure they stay on track to succeed and will receive regular one to one tutorials. You can contact them directly at any point in the year should you have any concerns or queries relating to your young person's progress in college.



We have a Student Code of Conduct which promotes and encourages positive behaviour amongst all our learners, ensuring that everyone at our College is treated with respect. We have a zero tolerance approach to abusive, threatening or violent behaviour towards students, staff, or visitors.

\*subject to eligibility

## Safeguarding

Cambria is committed to your young person's safety and wellbeing whilst both in and out of college during their time as a student with us. If they feel that they are at risk or have any concerns they can speak to any member of staff at the College, who will support them.

If you or your young person has any concerns, please contact the Safeguarding Team:

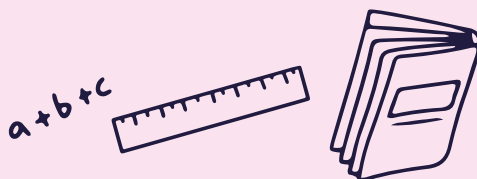
**0300 30 30 009**  
**safeguarding@cambria.ac.uk**  
or pop into Student Services.



## English & Maths Skills for Adults

If you are looking to take those first steps and learn basic or GCSE Maths and English skills, we offer a range of bite sized, FREE\*, confidence boosting courses based out in communities across Wrexham and Flintshire and at Cambria sites.

**0300 30 30 007**  
**skillsforadults@cambria.ac.uk**



# WHICH LEVEL OF STUDY IS BEST FOR ME?



We offer a range of full time courses from Entry Level to Higher Level, so there is sure to be a course that suits you at a level that will help you progress.

LEVEL / QUALIFICATION	ENTRY REQUIREMENTS	YOUR FUTURE
<b>STEP INTO CAMBRIA</b> For students with no GCSEs (or very low grades), or who have missed a lot of education, age 16-18 year olds.	No formal entry requirements.	<b>ENTRY LEVEL</b> or Level 1 courses or Jobs Growth Wales+
<b>ENTRY LEVEL</b> Prepares students for Level 1, age 16-18 year olds.	No formal entry requirements but we would encourage you to do the very best that you can in your exams.	<b>LEVEL 1</b> courses or Jobs Growth Wales+
<b>LEVEL 1</b> For students starting to learn a new skill; prepares you for Level 2.	Typically you will need <b>4 GCSEs at E or Grade 2 or above</b>	<b>LEVEL 2</b> courses, Jobs Growth Wales+, apprenticeship or employment
<b>LEVEL 2</b> Prepares students for Higher Level courses.	Typically you will need <b>4 GCSEs at D or Grade 3 or above</b>	<b>LEVEL 3</b> courses, apprenticeship or employment
<b>LEVEL 3</b> Prepares students for university, work or a higher apprenticeship.	Typically you will need <b>5 or more GCSEs at A*-C or Grade 4 or above</b>	<b>LEVEL 4</b> courses, university, higher apprenticeship or employment
<b>A LEVELS</b> Advanced academic courses preparing students for university or work. Many AS level subjects require a B grade or above at GCSE in the subjects being taken or related subjects.	Typically you will need <b>5 GCSEs at A*-C or Grade 4 or above</b> Must include Maths and English or Welsh First Language	
<b>ACCESS TO HE</b> Prepares learners for university, age 19+. 1 year course with flexible study options.	Mature learners only. Must have been out of full time education for at least two years.	<b>LEVEL 4</b> university / higher education courses
<b>JOBS GROWTH WALES+</b> Re-engages learners, preparing them for work via work placement, for 16-19 year olds. Entry via Working Wales Advisor or direct self referral.  Progression can be onto a college course, apprenticeship (at various levels) or into employment.		
	<b>APPRENTICESHIPS</b> Employed/work-based learning training. Various pathways and levels available. Please search here for vacancies <a href="http://web.cambria.ac.uk/job-shop">web.cambria.ac.uk/job-shop</a>  Contact the Cambria for Business team for further information <b>0300 30 30 006</b>	

Please note that some vocational pathways may require a relevant Level 2 or experience in the sector. Contact us for further information.

# HOW TO APPLY



Applying to study at Cambria is really easy, just follow these simple steps and you'll be on the journey to success in no time at all.

## Find your course and apply online

When you've found the perfect course you want to study, you can apply directly online from the course page at:

[www.cambria.ac.uk](http://www.cambria.ac.uk)

If you need help with any part of the application process, our Admissions team will be more than happy to help you with queries or questions.

[admissions@cambria.ac.uk](mailto:admissions@cambria.ac.uk)

## Stage 2

Once we have received your application, you will receive an email with a form to complete and send back to us.

## Decision of offer

Once we have received your Stage 2 form, your application will be passed to the curriculum teams.

If your application is successful you will receive an offer via email. This means that you've got a place on a course with us if you meet the entry requirements.

## Say Yes to Your Place

You will need to say yes to your place on GCSE Results Day in August.

## Start Date Info

You will receive an email with your start date and other useful information.

# LEVEL 3 LEARNING

**Level 3 courses give you access to university, higher or degree apprenticeships or skilled employment. Qualifications include A Levels, Practical courses, apprenticeships and Access to Higher Education courses.**

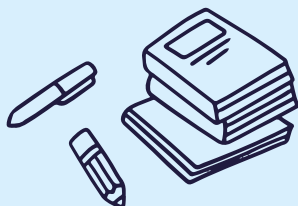
## A Levels

These are two year academic programmes studied at either Deeside Sixth or Yale Sixth. Students typically take three A Level subjects. Some students who achieve six or more A\*/A's (or 7-9) at GCSE may choose to take an additional A Level. A Levels are typically assessed via exams, with some subjects comprising a coursework element (see course information or our website for further details - pages 31-48). All A Level students will also enrol on to the Advanced Skills Baccalaureate qualification which will be studied as an additional A Level.



## Vocational / Practical Qualifications

These are mainly two year vocational/practical qualifications, equivalent to studying three A Levels. These courses blend practical, career focused skills and academic study to prepare you for direct entry into employment, university or apprenticeships. Most of these courses have a work experience element attached to them.



Vocational/practical courses are typically assessed through coursework and observation of competency in practical skills. Many students taking a two year Level 3 vocational qualification will study the Advanced Skills Baccalaureate, (see page 21 for more information) although staff will clarify whether this applies to you during the application process.

## Apprenticeships

These work-based training programmes give you the skills, knowledge and competencies needed to progress in your chosen career. Apprentices work for an employer and earn a salary as well as studying alongside. Some apprentices are assessed at the workplace and others attend college one day per week.

## Access to Higher Education (HE)

Access to Higher Education (HE) courses are for people who left school without the usual qualifications and have gained substantial life experiences since leaving school. They prepare you to study for a degree after successful completion.



# FOUNDATION LEARNING



**If you did not get any qualifications or your grades were lower than you had hoped for, it's not the end of the world.**

Our Entry and Level 1 programmes are here for exactly that reason - to help you get a real idea about what you want to do next. Courses can be undertaken in the following subject areas:

## FOUNDATION LEARNING COURSES

SUBJECT	LEVEL	DEESIDE	YALE	BERSHAM	NORTHOP
Animal Care	Entry	1			✓
Art	Entry	1		✓	
Business, Travel & Events		1		✓	
Beauty	Entry	1	✓	✓	
Building Services (Electrical & Plumbing)		1	✓		✓
Construction Trades	Entry	1	✓		✓
Digital Technologies		1		✓	
Engineering		1	✓		✓
Esports		1	✓		
Fabrication & Welding		1	✓		✓
Hairdressing	Entry	1	✓	✓	
Health, Social Care & Childcare	Entry	1	✓	✓	
Hospitality & Catering		1		✓	
Motor Vehicle	Entry	1	✓		✓
Media		1	✓		
Music, Performing & Production Arts		1		✓	
Sport & Fitness		1	✓	✓	
Step into Cambria	Entry			✓	✓
Uniformed Public Services		1	✓	✓	
Vocational Studies	Entry		✓		

## Your Level 1 Programme of Study

### Main Qualification

- Subject specific vocational qualification
- Theory units to help you develop knowledge
- Practical workshops to develop your skills

### Maths & English

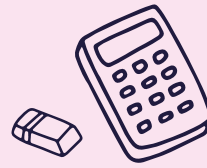
- Essential Skills Wales or GCSE (if you have achieved a D/3 grade then you will be given the opportunity to resit your GCSE)
- Essential for apprenticeships, employment or progression to higher level learning

### MADE Programme

- Life & Employability Skills
- Wellbeing & health
- Awareness of current affairs and the world around you







# ENGLISH & MATHS GCSE RESITS

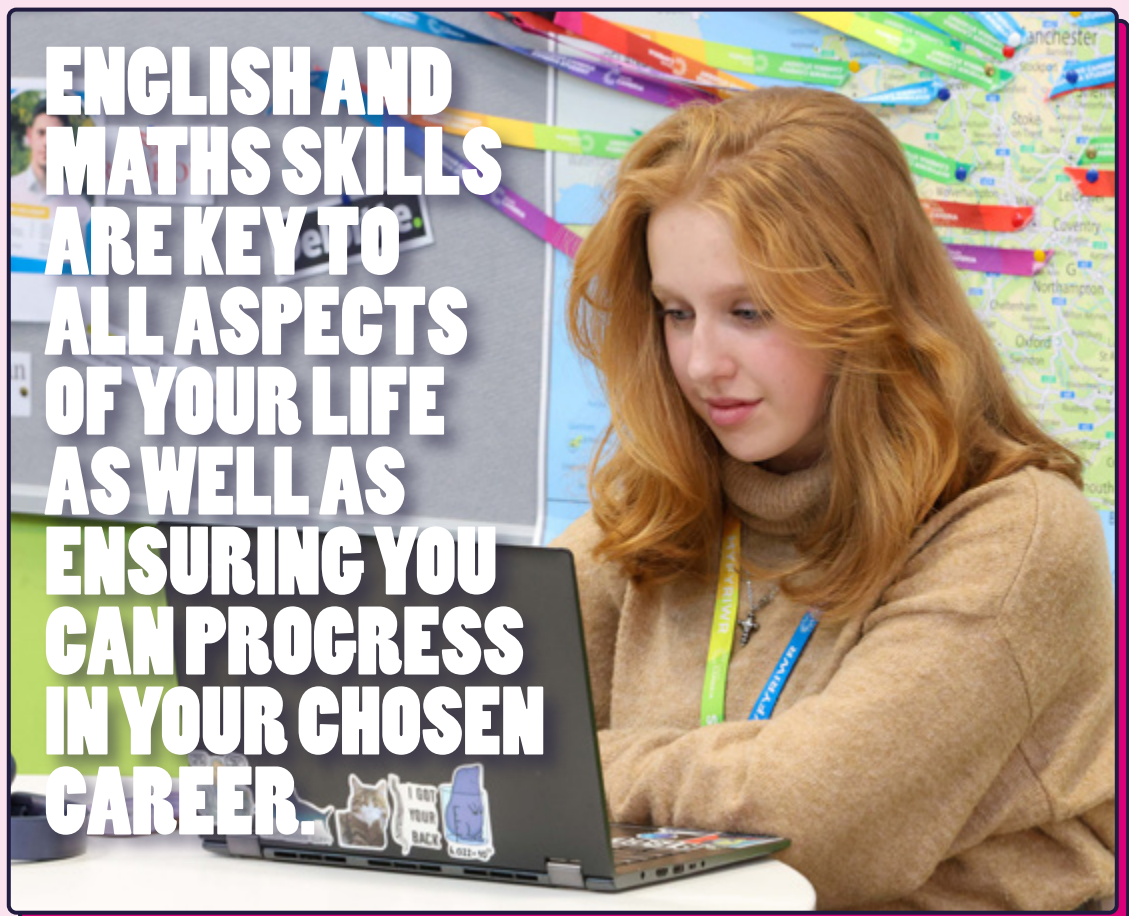


**All learners who have not yet achieved a grade C / 4 or above in English or Maths are required to continue to study these subjects.**

This can either be done as a GCSE, provided you have a grade 3 / D, or an Essential Skills Wales (ESW) qualification. We can help by offering you lessons and support sessions to make sure you have the guidance from tutors to improve your English and Maths skills. If you do not have a GCSE grade C / 4 or above in English or Maths, you'll be contacted by your tutor after enrolment to discuss your next steps.

## **Why improve your English and Maths?**

-  Your chances of finding employment are increased
-  You're likely to earn more
-  You'll have more opportunities when it comes to further learning or university
-  You'll be more prepared to progress to an apprenticeship.



# SUPPORTING YOU

Based at all sites at Cambria, Student Services are a welcoming and experienced team, who can offer information, advice and guidance on all aspects of your journey at college.

## Information, Advice and Guidance

We are your dedicated support hub for all things academic and personal. Our experienced team is here to guide you through your educational journey, connecting you to all the right areas of support, offering assistance with course selection, career planning and personal development.

Need help with **transport, financial aid, or wellbeing?** We've got you covered. At Cambria, we're committed to ensuring every student thrives. Reach out to us today and let us help you make the most of your college experience!

[studentservices@cambria.ac.uk](mailto:studentservices@cambria.ac.uk)

## Transport

We offer a subsidised transport provision of either travel on a designated College bus or an Arriva termly public bus pass. To be eligible for subsidised transport you will need to live over 3 miles from the nearest college site delivering your choice of course\*. If you travel by bicycle you will have access to bike racks at most sites.

[transport@cambria.ac.uk](mailto:transport@cambria.ac.uk)

## Safeguarding

Cambria is committed to your safety both inside and outside of College whilst you are a student with us. We have a dedicated safeguarding team within Student Services to help and support you.

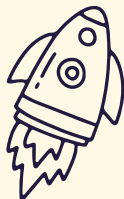
[safeguarding@cambria.ac.uk](mailto:safeguarding@cambria.ac.uk)

\*subject to eligibility

## Financial Support

Our Student Services team can help with financial support at College. If you are a full time student aged 16-18 and living in Wales, you may be eligible for Education Maintenance Allowance (EMA). If you are 19, or over, you may be eligible for a Welsh Government Adult Learning Grant. You may also be eligible for the Financial Contingency Fund (FCF) which could help pay for your uniform, kit, equipment, education trips, course books, PPE and DBS check refund (if required for your course).





## Careers Advice and Guidance

Our professional advisers provide help to prospective students on choosing the right course as well as advice and guidance once you are a student at Cambria. By using up to date Labour Market Information and trends, they can help you research careers in all job sectors. Applying to university? Our Career Advisers can help you explore prospective universities and support you with your application to UCAS.

[careers@cambria.ac.uk](mailto:careers@cambria.ac.uk)



# SWAP DON'T DROP

**If you join us and feel like you have chosen the wrong course or career pathway...**

Don't worry, Student Services are on hand to give you some extra information, advice and support to get you on the right course for your future plans. Either speak to your Progress Coach or call into Student Services for more information.

[studentservices@cambria.ac.uk](mailto:studentservices@cambria.ac.uk)

# say hello to



# Beri

**Introducing our Beri food and drink outlets at each site.**

**Students are entitled to collect a FREE breakfast and lunch from main College canteens, every day.**

Subject to eligibility. Students must present a valid College ID card and be wearing their Cambria lanyard. Food offering changes daily.

# SUPPORTING YOU

## Progress Coaches (PC)

Supporting you is our top priority. That's why, from the moment you join Cambria, you'll receive tailored support from your Progress Coach on a regular basis. Through weekly sessions, the MADE programme (Maximising Achievement and Developing Everyone) will develop your skills and knowledge beyond your qualification. Your PC will coach and support you in a variety of ways, developing your independence, so you can achieve the best outcomes for your future ambitions. Progress Coaches form part of the support you'll receive at Cambria and can signpost and refer you to specialist support if needed. You will also have the opportunity to meet with your PC one-to-one to review your progress and set goals and targets.



## Carers, Young Carers and Care Experienced Learners

The College is fully aware of the challenges faced by carers and young carers and is committed to improving your experience and opportunities as a Cambria student. We have achieved the Quality Standard in Carer Support. For more information, please contact:

[studentservices@cambria.ac.uk](mailto:studentservices@cambria.ac.uk)  
[youngcarers@cambria.ac.uk](mailto:youngcarers@cambria.ac.uk)

## Website Accessibility

Visitors to our website may listen to the content by using Recite Me. Recite Me reads website content out loud in a high quality, human-sounding voice. Each word is highlighted as it is read aloud and the sentence is highlighted in a contrasting colour. This allows users to easily identify what text is being read aloud and navigate within and between web pages. For more information please visit:

[www.cambria.ac.uk/accessibility](http://www.cambria.ac.uk/accessibility)

## Resilience Sessions and Counselling

Our Resilience Coaches help learners identify and overcome barriers to learning. Offering either bespoke one-to-one sessions, or group sessions, they will assist you to explore strategies and techniques which will help you. Developing your resilience and wellbeing will enable you to have a more positive and fulfilling College experience. They can also refer you to other support services, including counsellors and external agencies.

## Calon Cambria: Volunteering and Fundraising at Cambria

Cambria recognises the importance of giving back to our communities and the positive impact on society of charity initiatives. Through Calon Cambria, we encourage and support volunteering opportunities and charity fundraising for students and colleagues for any local registered and approved charities together with supporting national fundraising days and emergency appeals.

[calon@cambria.ac.uk](mailto:calon@cambria.ac.uk)

**TAP OR CLICK HERE**



to find out more  
about support

# GAMBRIA IS COMMITTED TO INCLUSION FOR ALL LEARNERS.



## Mental Health & Wellbeing Support

**We know that mental health and wellbeing can have a significant impact on your College experience. The Mental Health & Wellbeing Team are passionate about providing the best support and resources that promote your wellbeing and good mental health.**

### We provide:

- Wellbeing Hubs and pop up hubs - safe, quiet locations for you to relax and take part in mindful activities.
- Mental health and wellbeing activities throughout the year.
- Support from dedicated trauma-informed wellbeing staff across all college sites.
- One-to-one mental health and wellbeing sessions and support, tailored to meet your needs.
- Support with overcoming anxiety related to socialising, accessing college or travel to college.
- Inclusive support plans and strategies to help you succeed.
- Referrals, social signposting and multi agency working.
- Bespoke transition support and summer workshops.

[wellbeing@cambria.ac.uk](mailto:wellbeing@cambria.ac.uk)

## Specialist Tutor Support

Our approach is tailored to you and your individual needs. Our specialist tutors can support your independent learning if you have a learning need. Our specialist tutors are also able to offer the following:

- One-to-one screening to develop your understanding of your own strengths and potential challenges.
- Specialist strategies in effective learning.
- Internal referrals to further support teams to meet your needs, such as resilience coaching and wellbeing advisors.
- Assessments for Exam Access Arrangements (EAA) and Disabled Student Allowance (DSA).
- Assistive technology including software and hardware.
- Small group sessions.

[learning.support@cambria.ac.uk](mailto:learning.support@cambria.ac.uk)

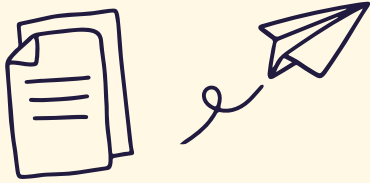


# SUPPORTING YOU

## Learning Support and Accessibility

The Learning Support Team is here to ensure that you have the support you need to succeed on your course. We can adapt this to meet your individual needs and requirements. We have learning support available across all sites and can provide assistance from your application throughout your journey. We will work with you to ensure that you have full access on-site whilst on your course. This may include us providing additional equipment, personal care plans or collaborating with health and safety for emergency evacuation plans. Please contact our support coordinators to discuss your requirements to ensure you have the best transition and planning.

[learning.support@cambria.ac.uk](mailto:learning.support@cambria.ac.uk)



### We provide:

- Class-based Learning Support at Entry 3 and Level 1.
- Transition support.
- Access to quiet and inclusive spaces, including the Inclusion Area and Wellbeing Hubs.

Depending on your individual, person-centred needs, we have all the above plus:

- Autism Spectrum Disorder (ASD).
- Specialist Support Workers.
- Bespoke and targeted support.
- Lunch and break supervision.
- Communication Support.
- Support to and from transport.
- Bespoke transition.
- Bespoke, personal care/mobility support.
- British Sign Language (BSL) Signer/Communication Support Worker.
- Interpreter (BSL).
- Orientation training.
- Sighted guide (for a blind student).



## Equality and Diversity

At Cambria we are committed to promoting equality, celebrating diversity and creating a fully inclusive learning experience. We are here to support you with any issues related to you and your identity. Cambria is an inclusive place for everyone regardless of your gender, sexuality, race, religion, disability, social class or anything else that makes you, you.

Cambria has a dedicated Equality and Diversity Coordinator who is there to support you in all issues related to equality including:

- Advice, guidance and support.
- Supporting your transition into college.
- One-to-one ongoing support.
- Student engagement on equality issues.
- Equality focused clubs and societies e.g. LGBTQIA+ Club.
- Equality in your education.

All members of the College will:

- Respect and celebrate the different backgrounds and cultures of all learners, staff and visitors.
- Reflect the diverse communities we serve.
- Have zero tolerance of bullying and harassment.
- Treat all learners and staff equally and fairly.
- Ensure learning and college services are accessible to all.
- Challenge prejudice.

[equalityanddiversity@cambria.ac.uk](mailto:equalityanddiversity@cambria.ac.uk)



## Additional Learning Needs

Our dedicated Additional Learning Needs (ALN) team work closely with the learning support team. The team can provide advice and guidance regarding your Individual Development Plan (IDP) or Education Health Care Plan (EHCP). The support we can offer is based on the additional learning provision detailed in your plan (IDP/ EHCP) and our ordinarily available (Universal) and Additional Learning Provision in college.



Our Learning Provision document provides further information about what support is available in college.

Please let us know if you have an IDP, EHCP or NHS Health Care Plan on application or contact us through our email:

[IDP@cambria.ac.uk](mailto:IDP@cambria.ac.uk)

**TAP OR CLICK HERE**



to find out more about Inclusion support

# LEARN IN WELSH

If you have studied through the medium of Welsh or bilingually at school you can continue to do so at Cambria.

## You can do the following in Welsh:

- Submit written work and receive bilingual notes
- Follow specific courses or modules
- Complete work experience in a range of Welsh speaking environments
- Assessments, entry interviews, tutorials, mentoring and meetings.

If you have no Welsh language skills or would like to develop existing skills, there are also a great deal of opportunities for you to improve and gain confidence in using Welsh within your chosen subject area.



**TAP OR CLICK HERE**



to find out more

## HEAR FROM OUR STUDENTS...

### MAGI ROBERTS

Level 3 Creative Media & Technology

**"I have always been taught through Welsh and wanted to continue at Cambria to maintain my language skills. The Welsh team's support was amazing - they helped with translations, allowed me to run Welsh clubs and work at the Eisteddfod. I won Welsh Speaker of the Year 2025 and became a Welsh ambassador. Now self-employed, I run 'Magi Roberts Media' as a bilingual freelance photographer and videographer, thanks to their help promoting my bilingual services."**



**TAP OR CLICK HERE**



to view our Learn in Welsh videos

TAP OR CLICK HERE



to visit the  
Toybox website



**Our nursery provides full and part time places for both staff, students and members of the local community.**

At Toybox Nursery we offer exceptional quality childcare, ensuring that both parents and children enter an environment that is warm and friendly, with care and education of the highest standard. We have the provision to cater for children with additional needs.

With a setting that provides educare for children aged 3 months to five years, it is important to understand that we view all age groups as a stepping-stone towards preparing them for their future.

**To find out more visit [toybox-nursery.cambria.ac.uk](http://toybox-nursery.cambria.ac.uk)  
[toybox@cambria.ac.uk](mailto:toybox@cambria.ac.uk) | 01978 267159**

As a Cambria student, if you have pre-school children, you may be eligible to receive financial assistance towards the cost of childcare. Please contact us for more information:  
[studentservices@cambria.ac.uk](mailto:studentservices@cambria.ac.uk)

# LIBRARIES & ACADEMIC SKILLS

**The Library is a great place to come and be part of student life at Cambria, lots of college activities take place in the libraries and we can't wait to meet you. We are here to support you and help make the best of your time in college - have a chat with the team about what you need.**

We provide a fantastic range of print and digital resources to help you with your coursework and take into account your individual preferences and learning styles.

Your Library is also a great place to come and study as we provide inclusive and accessible areas for group work or independent study.



## We can offer:

- Friendly support staff who are ready to answer any questions.
- Hands on support with research and information skills.
- Great IT resources - PCs, Chromebooks, copiers, Wi-Fi access for your own devices and places to recharge them.
- A relaxed and safe environment for you to take time out.
- An excellent range of books and ebooks to support with your course work.
- Fantastic online content - discover our digital collection on the Student Hub.
- Chromebooks to loan so you can complete work out of college.
- Course books and stationery for sale, if you forget to bring yours.
- Academic Skills Support, including planning and organising, exam preparation, creating a good assignment and much more.

**library@Cambria.ac.uk**

**TAP OR CLICK HERE**



to find out more



# LEARNER EXPERIENCE



**There are so many ways to embrace student life and maximise your time at Cambria. You will be offered opportunities to make new friends, try new activities, develop your skills and add value to your course. Not only will they help you with your health, physical wellbeing and CV, but will boost your self confidence and your employability skills.**

## Enrichment Experiences

Enrichment activities offer the perfect opportunity to discover, understand and develop your potential, increase your skills and interests, build your confidence and make friends!

## Student Voice

Student Voice is how you get to have your say and change what happens at the College. Become a Class Rep and attend Student Voice meetings or lead/join one of our student clubs and societies.

[\*\*studentvoice@cambria.ac.uk\*\*](mailto:studentvoice@cambria.ac.uk)

## Chaplaincy

Chaplaincy exists to help all staff and students feel connected and valued within our College community. Activities include workshops on spirituality and identity, bushcraft activities, multi-faith awareness workshops, and faith support services. We also have multi-faith and belief spaces across all sites.

[\*\*chaplaincy@cambria.ac.uk\*\*](mailto:chaplaincy@cambria.ac.uk)

## Active Cambria

We provide an extensive, inclusive wellbeing programme, consisting of action packed multi sport and fitness activities such as yoga, spin, football, dodgeball, badminton and fun team games. We can also offer sleep, nutrition, strength, fitness and lifestyle advice.

[\*\*activecambria@cambria.ac.uk\*\*](mailto:activecambria@cambria.ac.uk)

## PALs: Positive Active Leaders

Designed to break down the barriers that often prevent women from participating in physical activity, this programme is all about building confidence and fostering a positive outlook on staying active.

[\*\*pals@cambria.ac.uk\*\*](mailto:pals@cambria.ac.uk)

## Skills Competitions

Skills Competitions are a proven way to enhance your learning, development of technical skills and your self confidence. Cambria is a WorldSkills UK Centre of Excellence, and we participate and lead in competitions in Wales and the UK.

[\*\*competitions@cambria.ac.uk\*\*](mailto:competitions@cambria.ac.uk)

## Duke of Edinburgh (DofE)

We offer gold, silver and bronze awards to all students aged 14-24, offering the chance to develop invaluable skills for life and work to fulfil your potential.

[\*\*dofe@cambria.ac.uk\*\*](mailto:dofe@cambria.ac.uk)

## Enterprise and Starting Your Own Business

Whether you want to be your own boss in the future, explore a business idea or want to test trade right now, Cambria and Big Ideas Wales are here to support you!

[\*\*enterprise@cambria.ac.uk\*\*](mailto:enterprise@cambria.ac.uk)

# ELITE SPORT

**At Cambria, we are passionate about providing opportunities for elite athletes to represent the College at local, regional and national level. Our elite sport teams are made up of athletes studying across Cambria. Teams compete in Association of Colleges (AoC) Leagues and annual Welsh Colleges tournaments. There is also the opportunity for our individual athletes to compete in national college events.**

## Cambria Football

There are male football teams based at Yale and Deeside sites with a female football team based at Deeside. We compete in the AoC North West league and play games on a Wednesday afternoon. Players will have the opportunity to represent the College in the Welsh Colleges national tournament, this will provide opportunities for players to experience playing other colleges across the country.



## PSG Partnership

We are excited to announce our collaboration with the Paris Saint-Germain (PSG) Academy UK the programme is inclusive aiming to offer exceptional football and education pathways for young athletes, whether looking to further their football career or get back into the sport after a break.



Designed to help students excel both on and off the pitch. It allows aspiring footballers to develop their skills under the guidance of expert coaches, while pursuing their academic goals through a sports focused curriculum.

With the combined expertise of PSG and Coleg Cambria, students will benefit from world-class coaching, access to state-of-the-art facilities, and a comprehensive education that prepares them for future success, whether in football or other career paths.

## Cambria Netball

Our team is based at the Yale site, and is made up of learners from both Deeside and Yale. Each year sees teams from different clubs in North East Wales coming together to compete for Cambria, and that could be you! Selected players can trial for the Welsh College's National team who compete in fixtures each year.

**TAP OR CLICK HERE**



to find out more



# ADVANCED SKILLS BACCALAUREATE WALES

The Advanced Skills Baccalaureate Wales is an exciting qualification that started in September 2023 and replaced the Advanced Skills Challenge Certificate that the College delivered successfully for many years.

It encourages independence, adds real-life experience to the curriculum, develops additional personal interests and promotes skills highly regarded by universities and employers across the UK, such as critical thinking, problem solving, creativity and innovation.



## LEARN IN WELSH

Available in this subject  
- see page 16

Cymraeg

## Who will study the Advanced Skills Baccalaureate Wales?

All A Level students will study the subject in addition to their other A Level subjects. Most students taking a 2 year Level 3 vocational qualification will study the subject, although staff will clarify whether this applies to you during the application process. For further information please contact:

[studentservices@cambria.ac.uk](mailto:studentservices@cambria.ac.uk)

## What projects will I undertake?

The Advanced Skills Baccalaureate Wales is a 2 year programme that has the same UCAS points and grading structure as an A Level and can be combined with both A Level and Level 3 vocational programmes. You will undertake 3 projects during the 2 years, one based on sustainability, one focusing on your future plans and one completed individually on a subject of your choice.



## TAP OR CLICK HERE



for videos, case studies and more

# WHAT CAN I STUDY?

A LEVELS		Pages 26 - 48	
COURSE	DEESIDE SIXTH	YALE SIXTH	
Art & Design (Art, Craft and Design)	✓		
Art, Craft & Design (Art, Craft and Design, Fine Art, Textile Design, 3D Design and Graphic Design)		✓	
Art & Design (Photography: Interactive Media and Digital Communication)		✓	
Biology	✓	✓	
Business Studies	✓	✓	
Chemistry	✓	✓	
Classical Civilisation		✓	
Computer Science	✓	✓	
Criminology (Level 3 Applied Diploma)	✓	✓	
Digital Technologies (formerly known as ICT)	✓	✓	
Drama & Theatre Studies	✓	✓	
Economics	✓	✓	
English Combined Language & Literature		✓	
English Language	✓	✓	
English Literature	✓	✓	
Environmental Science		✓	
Film Studies	✓	✓	
Further Maths	✓	✓	
Geography	✓	✓	
Government & Politics	✓	✓	
History	✓	✓	
Law	✓	✓	
Mathematics	✓	✓	
Media Studies	✓	✓	
Music	✓	✓*	
Physical Education	✓	✓	
Physics	✓	✓	
Psychology	✓	✓	
Religious Studies (Philosophy, Ethics and Religion)	✓	✓	
Sociology	✓	✓	
Welsh (First Language)	✓	✓	
Welsh (Second Language)	✓	✓	

Please see course pages for further details

\*Taught at Deeside Sixth

## PRACTICAL COURSES

Pages 49 - 88

SUBJECT	DEESIDE	YALE	BERSHAM	LLYSFASI	NORTHOP
Access to Higher Education (HE)	✓	✓			
Beauty, Spa & Complementary Therapies	✓	✓			
Business, Management & Leadership		✓			
Childcare, Childhood Studies & Playwork	✓	✓			
Construction - Building Services	✓		✓		
Construction - Technical			✓		
Construction - Trades	✓		✓		
Creative Industries - Art & Design		✓			
Creative Industries - Creative Media Production	✓	✓			
Creative Industries - Music Performance & Production	✓	✓			
Creative Industries - Performing Arts & Backstage Theatre Production		✓			
Digital Technologies, Computing & IT	✓	✓			
Engineering - Fabrication & Welding	✓		✓		
Engineering - Manufacturing & Maintenance	✓		✓		
Engineering - Motor Vehicle	✓		✓		
Esports	✓				
Fashion Communication, Business and Marketing	✓				
Floristry		✓			
Hairdressing & Barbering	✓	✓			
Health & Social Care	✓	✓			
Hospitality & Catering		✓			
Independent Living Skills					✓
Learn English	✓	✓			
Neurodiverse-centred Courses	✓	✓			✓
Science - Forensic & Criminal Investigation		✓			
Sport & Fitness	✓	✓			
Step into Cambria		✓			✓
Travel & The Visitor Economy		✓			
Uniformed Public Services	✓	✓			

Please see course pages for further details

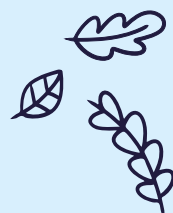
# WHAT CAN I STUDY?

## LAND-BASED COURSES

Pages 89 - 99

SUBJECT	LLYSFASI	NORTHOP
Agricultural Engineering	✓	
AGCO Diploma Training Scheme	✓	
Kubota Diploma Training Scheme	✓	
Agriculture & Precision Agriculture	✓	
Animal Care & Management		✓
Forestry & The Countryside	✓	

Please see course pages for further details



# CREATE YOUR FUTURE



**Not sure on your next step?  
Let's work it out together with some quick questions...**

## TOP 5 INTERESTS

**What are your main interests?** Use this space to list your top 5. This can help us to identify a college course that you're likely to enjoy.

## TOP 3 SKILLS



**What are you good at?**

## TOP 5 CAREERS

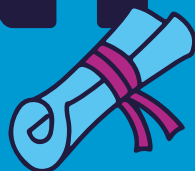
**What do you think you might like to do for a job?** This can help us work out what qualifications you're going to need.





# A LEVELS

## A PERFECT PATHWAY TO UNI



**TAP OR CLICK HERE**



to find out more  
about A Levels

# WELCOME TO A LEVELS

**Welcome to our two exciting, high performing sixth forms; Deeside Sixth and Yale Sixth. We are proud of our sector leading success, outstanding reputation for inspiring students to succeed, high quality of teaching and learning, and excellent guidance and support.**

Our students are at the centre of everything we do and we are confident that you will receive individual care, support and encouragement to flourish and achieve your goals. Visitors to the College regularly comment on the special, happy and purposeful environment. The friendly, respectful teamwork between staff and students makes this happen and all of our sixth form students are valued as individuals and encouraged to exceed their potential.



Our sixth forms are vibrant, friendly places which offer excellent libraries and cutting edge IT facilities to support study and independent research. We help you to develop your skills beyond the curriculum to prepare you for life after college, whether you go on to study at university level, take an apprenticeship or start a great career.

On our two-year programme, A Level students usually choose to study three subjects, although some learners who achieve six or more GCSEs at grades A\*/A or 7-9 may consider choosing four subjects. Your final choice of subjects is always confirmed with staff prior to starting to ensure that these represent the most appropriate choice for you.

In addition to the A Level subjects you choose yourself, we will further support you to achieve your potential by enrolling you on the Advanced Skills Baccalaureate Wales qualification which you will study as an additional A Level and which will assist you to develop additional academic and employability skills. Further information about this qualification can be found on page 21 in this guide.

To study A Levels you must have at least 5 GCSEs at C / 4 or above including GCSE English Language / Welsh 1st Language and Maths (not Numeracy). Please also check our individual subject entry requirements as they may have more specific requirements in addition to these.



## LEARN IN WELSH

All of our A Level courses can be assessed through the medium of Welsh.

# OUR SITES & FACILITIES

We have two exciting, high performing local sixth forms for you to choose from. Each boasting world-class facilities and the latest technology for learners to utilise.

## DEESIDE SIXTH

**Deeside Sixth is in Connah's Quay and is situated in a ground-breaking £14 million complex.**

At Deeside Sixth all students are able to utilise the latest technology in our IT suites, as well as Chromebooks in all teaching rooms.

There is an Art Studio with open air terrace, Design suite with 3D printer and laser cutter, Drama Studio, Music Centre and large Science laboratories. Students benefit from the excellent library facilities where learners can access course texts, online or in print, purchase resources and textbooks, receive support in using the Google Suite and for academic study skills such as assignment writing and referencing.



**TAP OR CLICK HERE**



to take a virtual tour of this site



# YALE SIXTH

Yale Sixth is based in the heart of Wrexham where a number of multi million pound redevelopments have recently been completed. New facilities include an industry-standard commercial spa, simulated health wards, Virtual Reality/immersive environments, a 200-seat conference hall, a cutting edge study space, a revolutionary sports space and IT suites.

**IÂL 6 YALE**  
CAMBRIA

At Yale Sixth, there are modern teaching classrooms, with well-equipped Science laboratories, Performing Arts studios, Computer suites, and two lecture theatres to support learning experiences and the transition to Higher Education. All students have access to IT facilities and equipment in teaching rooms to support learning, such as Chromebooks and up-to-date apps.

Students have access to the university-style library, which has space over three floors to undertake private study, group tutorials and to access support for their academic skills development from the excellent library facilities where learners can access course texts, online or in print, purchase resources and textbooks, receive support in using the Google Suite and for academic study skills such as assignment writing, referencing etc.



**TAP OR CLICK HERE**



to take a virtual tour of this site



# HEAR FROM OUR STUDENTS...

## TEGAN HASKELL

Maths, French, Chemistry & Biology

**“I chose to study my A Levels at Yale Sixth because I have always loved the sciences and the laboratories at Coleg Cambria are wonderful.**

**“My proudest achievement during my time at Coleg Cambria was being awarded silver certificates in both my chemistry and biology Olympiads.”**



**IÂL 6 YALE**  
CAMBRIA

## MEGAN ASTBURY

Sociology, Media & Art

**“I really liked the opportunities Deeside Sixth offered me, they had a large choice of A Level courses available to me.**

**“I was extremely proud to receive the Deeside Sixth Student of the Year Award as it has been a challenging year balancing my studies and work commitments. I am now looking forward to continuing my studies at Bangor University.”**



Glannau Dyfrdwy  
**Deeside**  
CAMBRIA



## A Level Art and Design\* (Art, Craft and Design)



**CAN BE STUDIED AT:**

**DEESIDE SIXTH**



The course enables you to develop skills through a variety of activities and/or specialisms which could include textiles, drawing, painting, 3D and/or print making.

You will use a wide range of media, techniques and approaches to produce a portfolio of art, craft and design work. There will be opportunities to work with practising artists, designers and craftspeople. You will participate in cultural and contextual activities and educational visits to support your studies.

## A Level Art and Design\* (Art, Craft and Design, Fine Art, Textile Design, 3D Design and Graphic Design)

The course enables you to develop knowledge and practical skills to help you develop as a creative practitioner.

You will explore a range of specialisms from textiles, drawing, painting, 3D, to print making. You will work with traditional art materials and also have the opportunity to use the latest digital media, using industry standard iMac computers, Adobe software and Computer Aided Design (CAD). There will be opportunities to work with practising artists, designers and craftspeople.

**CAN BE STUDIED AT:**

**DEESIDE SIXTH**

**YALE SIXTH**



\*Students cannot take more than one Art and Design course.

**Do you receive additional support at school? See page 14**

# A Level Art and Design\* (Photography: Interactive Media and Digital Communication)



The course enables you to develop knowledge and practical skills to help you develop as a creative practitioner.

You will use a wide range of media, techniques and approaches such as illustration, advertising, packaging design and communication and computer graphics to produce a portfolio of work. You can expect to work with traditional art materials and also the latest digital media using industry standard iMac computers, Adobe software and CAD.

**CAN BE STUDIED AT:**

**YALE SIXTH**



## A Level Biology



**CAN BE STUDIED AT:**

**DEESIDE SIXTH**

**YALE SIXTH**



**In A Level Biology you will cover a wide range of topics including human body systems, evolution and biodiversity.**

You will also look at population growth, photosynthesis, respiration, food production and genetic inheritance. You will gain good laboratory experience through which you will develop your practical and writing skills. The first year of study includes cell structure, cell division, adaptation for nutrition, transport in plants and animals. Year two study extends to consider wider applications of Biology such as microbiology, homeostasis, inheritance and applications of genetics.

\*Students cannot take more than one Art and Design course.



**Apply online today at [www.cambria.ac.uk](http://www.cambria.ac.uk)**

# A Level Business Studies



**CAN BE STUDIED AT:**

DEESIDE SIXTH

YALE SIXTH



The course will focus on the ever changing nature of business and how it is affected by national and international issues.

In year one, students will study two modules. The first provides an introduction to the scope of Business Studies within the context of starting a new business. In the second module, students examine how to measure the effectiveness of larger businesses, including marketing, finance, operations management and human resources. In year two, students build on the theory introduced during their first year.

# A Level Chemistry

Chemistry is concerned with the study of materials, their properties, reactions and uses.

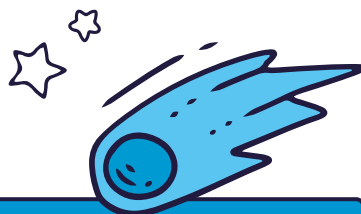
Students enjoy learning through combined practical and theory work in which they experience working independently and as part of a group. Students gain important team and communication skills and the ability to reason logically on this course. They also develop planning, investigative, research and practical skills in the laboratory. These skill sets are highly valued by employers.



**CAN BE STUDIED AT:**

DEESIDE SIXTH

YALE SIXTH



**Do you receive additional support at school? See page 14**

# A Level Classical Civilisation

**CAN BE STUDIED AT:**

**YALE SIXTH**



**Classical Civilisation is the study of ancient Greece and Rome through the history, literature and myth of these two civilisations.**

All students will study material from both Greece (year 1) and Rome (year 2) and their surrounding worlds, drawn from diverse time periods ranging from Archaic Greece to Imperial Rome. This study aims to give students a detailed understanding of this fascinating period in world history and an appreciation of its massive influence. During their study, students are encouraged to sharpen critical thinking and analytical skills in making sense of these events and personalities.



# A Level Computer Science

**This course, with its emphasis on data abstraction, general problem solving, algorithmic and mathematical reasoning, scientific and engineering based thinking, is a good foundation for understanding the future challenges in this increasingly technological age.**

You will develop an understanding of, and the ability to apply, the fundamental principles and concepts of Computer Science. You will gain the ability to analyse problems in computational terms through practical experience of solving such problems and develop the ability to articulate the individual (moral), social (ethical), legal and cultural opportunities and risks of digital technology.

**CAN BE STUDIED AT:**

**DEESIDE SIXTH**

**YALE SIXTH**



**Apply online today at [www.cambria.ac.uk](http://www.cambria.ac.uk)**

# Criminology - Level 3 Applied Diploma



This course is aimed at A Level students who are interested in a career in the police, law enforcement, youth justice, probation, prison and social care sectors. The course is taught over two years and is taken as part of an A Level package.

As a student on this course you will explore the theories surrounding criminology as well as how to effectively analyse and evaluate situations where crimes are committed. The legal and policing sectors are vast and there are lots of rewarding career opportunities available. The main purpose of this course is to use the qualification to support access to Higher Education.

**CAN BE STUDIED AT:**

DEESIDE SIXTH

YALE SIXTH

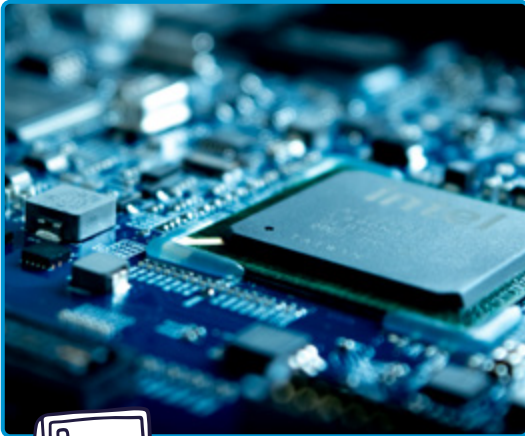


# A Level Digital Technologies (formerly known as ICT)

**CAN BE STUDIED AT:**

DEESIDE SIXTH

YALE SIXTH



The course develops the capacity for thinking creatively, analytically, logically and critically.

You will learn to apply skills, knowledge and understanding of Digital Technologies in a range of contexts to solve problems and gain an understanding of emerging technologies and the consequences of using Digital Technologies on individuals, organisations and society as well as social, legal, ethical and other considerations on the use of Digital Technologies.

You will learn transferrable skills needed such as co-operative working and project management.

**Do you receive additional support at school? See page 14**

# A Level Drama and Theatre Studies



**CAN BE STUDIED AT:**

**DEESIDE SIXTH**

**YALE SIXTH**



**A Level Drama and Theatre Studies offers the opportunity to deepen and broaden an intellectual and practical understanding of the subject area and also develop confidence, communication and presentation skills.**

In year one you will understand and analyse live performances, study a set text and perform a scripted piece. In year two you will study two texts, devise an original piece of drama and perform a scripted piece of theatre to a live audience. You will be required to attend professional theatre performances regularly.

# A Level Economics

**During the two years of the programme students will cover topics including an introduction to economic principles, economics in action, exploring economic behaviour, and evaluating economic models.**

Delivery of the programme is varied and interesting, consisting of lectures, workshops, guest speakers, tutorials, trips and conferences.

**CAN BE STUDIED AT:**

**DEESIDE SIXTH**

**YALE SIXTH**



**Apply online today at [www.cambria.ac.uk](http://www.cambria.ac.uk)**

# A Level English Combined Language and Literature



**English Combined Language and Literature is an enjoyable, challenging and highly successful course at the College.**

As a student on this course you will learn to analyse and compare a wide variety of texts, from poetry, drama and novels to journalism and non-literary texts. You will acquire a detailed linguistic and literary vocabulary and knowledge of the contexts in which texts are written and received. The course also requires you to develop your writing skills: in fiction, in factual texts and in essays. Overall, the language skills developed at A Level are suitable for a huge variety of degree courses.

**CAN BE STUDIED AT:**

**YALE SIXTH**



Note: Cannot be taken in combination with A Level English Language or A Level English Literature.

## A Level English Language

**CAN BE STUDIED AT:**

**DEESIDE SIXTH**

**YALE SIXTH**



**Language is woven into every aspect of our lives and influences our thoughts, actions and what we believe to be real.**

English Language is a fascinating and challenging course and includes the exploration of Language and Gender, Language and Power and Contemporary English. You will develop a knowledge of English grammar and style and study the theory behind spoken language. You will have the opportunity to analyse a wide range of texts, spoken and written, from the past and the present and produce your own creative writing. Studying this course will strengthen the communication skills necessary for success in your other A Levels and life.

Note: Cannot be taken in combination with A Level English Combined Language and Literature.

**Do you receive additional support at school? See page 14**

# A Level English Literature

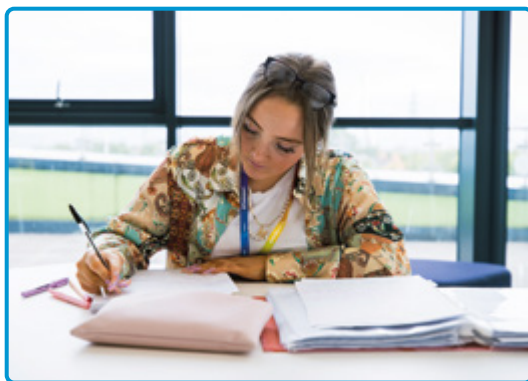
The study of A Level Literature increases understanding of how meaning is created in literary texts and develops the ability to respond to literary texts through discussion and written work.

Students will study poetry, prose and drama from various periods. There is an element of wider reading and students will acquire a sophisticated knowledge of the technical vocabulary of literature. Students will explore multiple interpretations of texts and gain an understanding of the contexts related.

**CAN BE STUDIED AT:**

DEESIDE SIXTH

YALE SIXTH



Note: Cannot be taken in combination with A Level English Combined Language and Literature.

# A Level Environmental Science

**CAN BE STUDIED AT:**

YALE SIXTH



The environmental sector is a growth industry and on this course you will develop the key skills required to either enter the workplace or continue onto Higher Education.

If you have a keen interest in the sustainability of the planet then this course could be for you. You will develop skills through a variety of activities that focus on the physical environment, biological resources, energy resources, pollution and more.



**Apply online today at [www.cambria.ac.uk](http://www.cambria.ac.uk)**

# A Level Film Studies

**CAN BE STUDIED AT:**

**DEESIDE SIXTH**

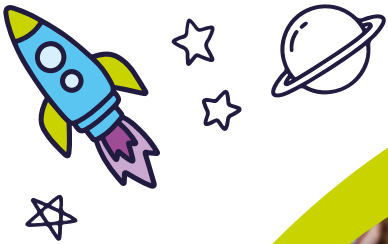
**YALE SIXTH**



**Film is one of the main cultural innovations of the 20th century and a major art form of the last hundred years.**

Those who study it characteristically experience a high degree of enthusiasm and excitement for what is a powerful and culturally significant medium, inspiring a range of responses from the emotional to the reflective.

Film Studies consequently makes an important contribution to the curriculum, offering the opportunity to investigate how film works both as a medium of representation and as an aesthetic medium.



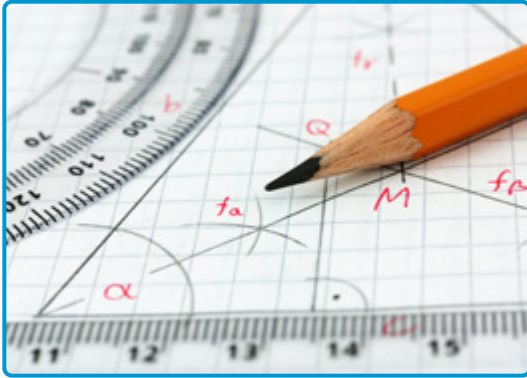
**Do you receive additional support at school? See page 14**

# A Level Further Maths

**CAN BE STUDIED AT:**

**DEESIDE SIXTH**

**YALE SIXTH**



In this course you will build on the understanding gained in A Level Maths, extend your range of skills and techniques and use them in more difficult, unstructured problems.

You will apply mathematical logic and techniques across Pure Mathematics, Statistics and Mechanics. Further Maths is recommended for able Mathematicians and is increasingly a preferred option at many universities for those intending to study Physics, Engineering or Chemistry.

$$\pi r^2 \times a = \dots$$



# A Level Geography

Topics you will study include coastal landscapes, tectonics and changing places making links from GCSE topics and developing the concepts further; the contemporary strand of sustainability links all units.

The introduction of the non-examined assessment (coursework) is an exciting opportunity for students to enquire and investigate an area of the specification which interests them. A number of guest speakers and lectures are arranged for students to develop wider knowledge.



**CAN BE STUDIED AT:**

**DEESIDE SIXTH**

**YALE SIXTH**



**Apply online today at [www.cambria.ac.uk](http://www.cambria.ac.uk)**

# A Level Government and Politics



Politics is a prestigious A Level, an exciting and dynamic new subject to study, giving you a range of skills welcomed by universities and progression to a wide choice of future courses and careers.

The main areas of study will focus on the government in Wales and the United Kingdom and participating in a democracy.

Activities include mock elections, trips and opportunities to meet and question a range of guest speakers including MPs and MSs.

**CAN BE STUDIED AT:**

DEESIDE SIXTH

YALE SIXTH



# A Level History

**CAN BE STUDIED AT:**

DEESIDE SIXTH

YALE SIXTH



Be a part of the thriving, lively and successful department and learn about events that have shaped the world you live in and the people and circumstances that shaped these events.

History is a challenging and stimulating A Level, and is therefore one of the A Level subjects that are preferred by top universities.

Gain an understanding of historical terms, concepts and skills. Learn about significant individuals, societies, events and issues, and analyse different historical perspectives.



**Do you receive additional support at school? See page 14**

# A Level Law



The course looks at the workings of the legal system and considers its effectiveness.

Students will discover the various sources of law, and explore the relationship between law and morality. The course will increase your understanding of how law operates in practice, with a study of the civil and criminal court systems. You will also come across some interesting and surprising legal cases, and have the opportunity to take part in debates and mock trials. In the second year, A Level students will critically examine the role of law enforcement and the police. Students will also study criminal law, the criminal trial process, sentencing and youth justice.

**CAN BE STUDIED AT:**

DEESIDE SIXTH

YALE SIXTH



# A Level Mathematics

**CAN BE STUDIED AT:**

DEESIDE SIXTH

YALE SIXTH



**A Level Maths develops knowledge and skills across questions requiring use of mathematical argument, knowledge and proof, problem solving, modelling and use of data in statistics.**

You will learn to recognise how a situation may be represented mathematically and understand the relationship between 'real world' problems and standard mathematical models. Maths is recommended for able Mathematicians and is increasingly a preferred option at many universities for those intending to study subjects such as Physics, Engineering or Chemistry.



**Apply online today at [www.cambria.ac.uk](http://www.cambria.ac.uk)**

# A Level Media Studies

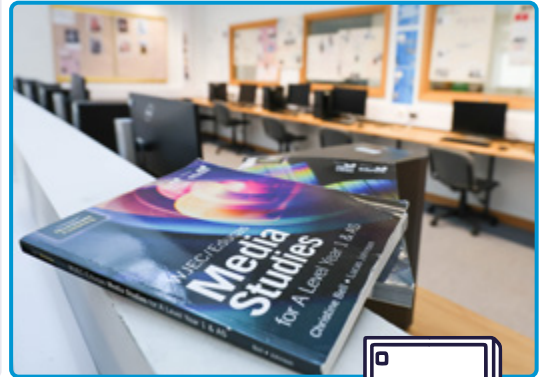
Media learners will be introduced to the knowledge, understanding and skills required to analyse media products including television, video games, magazines, advertising, blogs, newspapers and radio.

Students will create a cross-media production in two forms, applying their knowledge and understanding of media language, representation, industry and audiences. Students will have training in the use of cameras and editing software, and have opportunities to work in the TV studio.

**CAN BE STUDIED AT:**

DEESIDE SIXTH

YALE SIXTH



# A Level Music

**CAN BE STUDIED AT:**

DEESIDE SIXTH

YALE SIXTH\*



The course enables you to develop skills through a variety of activities. Your coursework will consist of studies such as composition, appraisal, ensemble and/or solo performance.

You will participate in cultural and contextual activities and educational visits to support your studies.

\*Please note that this course is taught at the Deeside site and travel will be required. Speak with our Student Services team to discuss arrangements.

**LEARN IN WELSH**

Available in this subject  
- see page 16

Cymraeg



**Do you receive additional support at school? See page 14**

# A Level Physical Education



During this course you will study applied anatomy and physiology, exercise physiology, biomechanical movement, skill acquisition, sport psychology, sport and society and the role of technology in physical activity and sport.

The A Level specifications will require students to demonstrate their ability to apply knowledge and understanding from the different areas outlined above to physical activity and sport and to use theories, concepts, principles and models to analyse and evaluate physical activity and performance.

**CAN BE STUDIED AT:**

DEESIDE SIXTH

YALE SIXTH



**Apply online today at [www.cambria.ac.uk](http://www.cambria.ac.uk)**

# A Level Physics

**CAN BE STUDIED AT:**

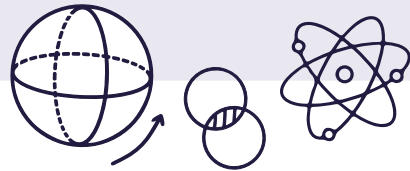
**DEESIDE SIXTH**

**YALE SIXTH**



**You will study motion, energy and matter, this covers the topics of kinematics, dynamics, energy concepts, solids under stress, using radiation to investigate stars, particles and nuclear structure.**

You will also study electricity and light, and oscillations and nuclei, including circular motion, vibrations, kinetic theory, thermal physics, nuclear decay and nuclear energy.



# A Level Psychology

**CAN BE STUDIED AT:**

**DEESIDE SIXTH**

**YALE SIXTH**



**Psychology is an exciting subject which attempts to understand how the mind works and to explain why individuals behave in certain ways.**

During year one you will study the following units; Psychology: Past to Present and Exploring and Investigating Behaviour. In year two, you will look at the following units; Implications in the Real World which includes, The Study of Behaviours, such as autistic spectrum behaviours, addictive behaviours, bullying behaviours, criminal behaviours, schizophrenia and stress, as well as Controversies. You will also study Applied Research Methods.

**Do you receive additional support at school? See page 14**

# A Level Religious Studies (Philosophy, Ethics and Religion)



The course aims to develop understanding and knowledge of a wide variety of concepts across philosophy, ethics and core religious beliefs, movements and practices in one of the main world religions.

Year one consists of an introduction to Christianity and an introduction to Philosophy of Religion and Ethics.

Year two consists of further study of Christianity, including the topics of religious figures and sacred texts, and study of significant historical and social development in religious thought.

## CAN BE STUDIED AT:

DEESIDE SIXTH

YALE SIXTH



# A Level Sociology

## CAN BE STUDIED AT:

DEESIDE SIXTH

YALE SIXTH



Key topic areas are: socialisation, culture, identity, the family, education, research methods, social class, gender, ethnicity, age, crime and deviance.

No prior knowledge of the subject is required but an interest in, and awareness of current political and social issues is key. Lessons include a range of teaching methods but the most popular are the debates the subject content can generate. Students are required to research, analyse, assess and evaluate sociological theories, equipping them with a wide range of transferable skills.



Apply online today at [www.cambria.ac.uk](http://www.cambria.ac.uk)

# A Level Welsh (First Language)

**CAN BE STUDIED AT:**

**YALE SIXTH**



First Language Welsh is aimed at students who completed First Language Welsh at GCSE and is designed to encourage students to communicate correctly and fluently, both orally and in writing, write creatively and factually for a range of purposes, analyse familiar and unfamiliar texts independently, listen and respond to the opinions of others when expressing a point of view, express an independent opinion, based on knowledge and understanding of literary and factual texts and respond in Welsh with clarity, in a relevant, confident and structured manner.

First Language Welsh is delivered exclusively through the medium of Welsh.

A Level Welsh is an extremely valuable A Level for those who pursue careers within Wales.



**Do you receive additional support at school? See page 14**

# A Level Welsh (Second Language)

Second Language Welsh A Level is designed to encourage students to communicate correctly and fluently, both orally and in writing, write creatively and factually for a range of purposes, analyse familiar and unfamiliar texts independently, listen and respond to the opinions of others when expressing a point of view, express an independent opinion, based on knowledge and understanding of literary and factual texts and respond in Welsh with clarity, in a relevant, confident and structured manner.

This is an excellent qualification to support any students looking to pursue a career in Wales.

## CAN BE STUDIED AT:

DEESIDE SIXTH

YALE SIXTH



Apply online today at [www.cambria.ac.uk](http://www.cambria.ac.uk)



# PRACTICAL COURSES BUILD YOUR CAREER



# WELCOME TO PRACTICAL COURSES

**These courses are mainly two year courses, equivalent to studying three A Levels. These courses blend practical, career focused skills and academic study to prepare you for direct entry into employment, university or apprenticeships.**

Most of these courses have a work experience element attached to them. Practical courses are typically assessed by coursework and observation of competence in practical skills but may also include external tests or exams.

## LEARN IN WELSH

All of our practical courses can be assessed through the medium of Welsh.

## HOW TO SUCCEED



**To succeed in our practical courses, you should be a motivated, ambitious, and determined individual with a strong commitment to your chosen course of study.**

You will need to be suitably qualified to meet the entry requirements of the course for which you are applying and to demonstrate a keen interest in developing your skills and knowledge within your chosen discipline. A willingness to learn and adapt is essential, as you will be exposed to new techniques, ideas, and challenges throughout your course.

For some courses, you may be required to complete a small pre-enrolment project to demonstrate your skills and suitability for the course.

In addition to your course, you will also have the opportunity to meet a range of wider educational requirements, such as English and Maths skills. At Level 3, you will be required to participate in the Advanced Skills Baccalaureate Wales, which will help to enhance your overall skill set and prepare you for future career opportunities.

To succeed in practical courses at Coleg Cambria, you must attend and actively engage with the teaching sessions, and be open to gaining work experience and exposure to industry practices and skills as routine elements of your study.

Moreover, it is essential that you are prepared to dedicate a significant amount of time to independent study outside of your scheduled classes throughout your course. This hands-on approach and additional effort will help you develop the practical and technical skills and knowledge necessary to excel in your chosen course, reinforce your understanding of the subject matter, and allow you to explore topics in greater depth.

Ultimately, your commitment to independent study will contribute significantly to your overall success in the course and make a smooth transition into the workplace or Higher Education.

**Please see course pages for individual subject details (page 60 onwards) or visit one of our Open Events to chat to course tutors**

**TAP OR CLICK HERE**



for details of our Open Events

# OUR SITES & FACILITIES

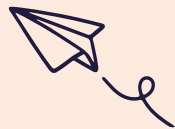
## BERSHAM ROAD

**Cambria Bersham Road, situated in Wrexham City boasts some of the best facilities in the region. We have invested extensively to ensure we offer you the best equipment and technology to help with your study.**

The site is home to an £8.5m new state-of-the-art Engineering Technology Centre, Construction, Welding and Motor Vehicle workshops, which provide world-class education.



**TAP OR CLICK HERE**  
to take a virtual tour of this site



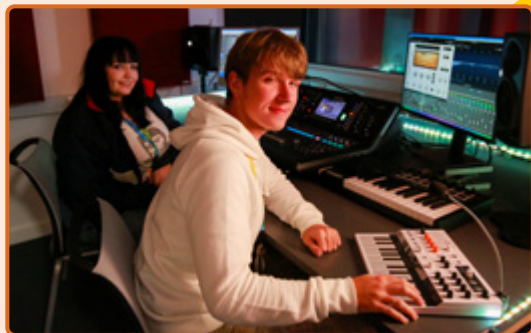
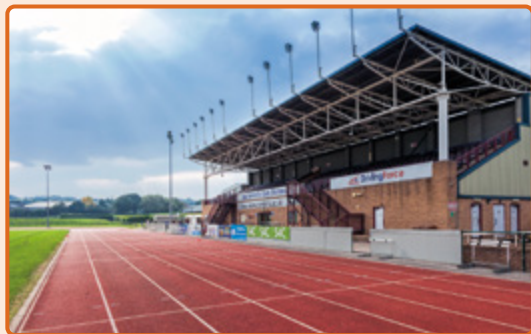
# OUR SITES & FACILITIES

## DEESIDE

**Cambria Deeside has an excellent reputation and after extensive investment is home to Deeside Sixth and the college's University Centre.**

The award-winning Engineering Centre of Excellence features world-class engineering facilities and the sports facilities are some of the best in the region.

Studying at Deeside allows for hands-on experience in our training salons, sound studio and newly refurbished athletics track.



**TAP OR CLICK HERE**



to take a virtual tour of this site



# YALE

**Cambria Yale, situated in the heart of Wrexham, has a long-standing reputation for excellence. It is home to Yale Sixth, many vocational courses and apprenticeships.**

Yale features an impressive range of facilities with extensive resources and has recently undergone a number of multi million pound redevelopments, including the new Healthcare and Therapies Centre of Excellence. This state-of-the-art £14m facility includes an industry-standard commercial spa and health bar giving learners the opportunity to work and train alongside industry professionals, as well as simulated health wards and Virtual Reality/immersive environments.

Other specialist teaching facilities include well equipped science laboratories, computer suites and art studios. All students have access to the latest technology and are encouraged to use the university style library which has space over three floors to undertake private study.

**Please see course pages for further details.**



**TAP OR CLICK HERE**



to take a virtual tour of this site



# WHAT IS AN APPRENTICESHIP?

**Apprenticeships give you the opportunity to work for an employer, earn a salary, get paid holidays and achieve nationally recognised qualifications. You will also gain valuable workplace skills and experience.**

Apprenticeships are for all ages and for people already employed, subject to eligibility criteria. They develop your knowledge and practical ability to do your job effectively and by being employed you are developing employability skills and personal confidence. Apprenticeships are a great way to start and develop your career and open the door to exciting employment prospects.

## Key Benefits:

- 🍷 Earn a wage
- 🍷 Gain recognised qualifications
- 🍷 Get on-the-job training and skills
- 🍷 Get paid holidays
- 🍷 Start your career journey
- 🍷 Develop employability skills and confidence
- 🍷 Opportunity to progress to degree level apprenticeships
- 🍷 College benefits including student card and discounts.

The Welsh Government and Medr support an all age Apprenticeship programme, therefore you could be eligible for an Apprenticeship opportunity to train, regardless of age or job title.

Cambria works with a wide range of employers to support Apprenticeships from Level 2 to Level 6 in over 400 different pathways across a wide variety of sectors.

There are five levels of Apprenticeships which take between 1 to 4 years to complete individually (more if progressing through the levels). You will gain industry approved qualifications, extensive work experience and qualifications within literacy, numeracy and digital literacy (for specific courses).

## How do I Apply?

If you find a job, you can simply speak to your employer about becoming an Apprentice. If your employer agrees, please contact the Employer Engagement team at Cambria for Business to discuss the process and find out about the most fitting Apprenticeship and level.

If you don't already have a job visit our Apprenticeship vacancies page to see which employers are currently taking on Apprentices:

[www.cambria.ac.uk/jobs](http://www.cambria.ac.uk/jobs)

Email [employers@cambria.ac.uk](mailto:employers@cambria.ac.uk)  
or call **0300 30 30 006**  
to speak to one of the team.

We support full time learners to apply for Apprenticeships - for more information scan the QR code:



**Cambria delivers Apprenticeships in most occupational areas including:**

Accounting	Agriculture & Precision Agriculture	Animal Care & Management
Beauty, Spa & Complementary Therapies	Business Administration	Business, Management & Leadership
Childcare, Childhood Studies & Playwork	Computing & IT	Construction & Building Services
Customer Service, Advice & Guidance	Digital Technologies	Engineering, Manufacturing & Maintenance
Equine	Fabrication & Welding	Floristry
Food Manufacturing	Forestry & The Countryside	Hairdressing & Barbering
Health & Social Care	Horticulture & Landscaping	Hospitality & Catering
Human Resources (CIPD)	Motor Vehicle	Teaching, Assessing & Education
Warehousing & Logistics		



## DARSHI GODFREY

AAT Level 4 in Professional Accounting

“I studied for an AAT Apprenticeship because I have always been interested in working in the finance sector. I learnt about bookkeeping and how to balance bank statements. We have also covered journals, credit control and financial statements which are really useful in my job role.

“I am currently working as an Assistant Accountant. This course has helped me to improve my skills so much and has added value to my career.”

# JOBS GROWTH WALES+

**Are you aged 16-19, living in Wales and want to secure an apprenticeship, a job or help to get on to a full time college course?**

Our Jobs Growth Wales+ programme will help you to develop your personal skills and overcome barriers that are preventing you from entering the world of work or securing employment. We will help you to improve your confidence, gain qualifications, focus on finding a career that's right for you and improve your literacy and numeracy skills.



You will attend a work placement in an area you are interested in, which will help you identify your career pathway.

You will be supported throughout your time on the programme by a dedicated and supportive team to help you secure further learning, employment or an apprenticeship.



The programme will include various workshops that will cover:

## Personal & Social Skills

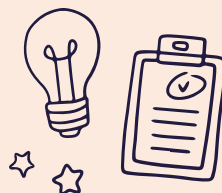
- Confidence and communication skills
- Attitudes and behaviours
- Wellbeing
- Personal resilience
- Transferable skills eg. teamwork, listening
- Problem-solving
- British Citizenship
- Volunteering and community engagement.

## Employability Skills

- Focus on next steps
- Industry tours
- CV preparation
- Interview skills
- Money management
- Entrepreneurship
- Work tasters.

## Skills Development

- Development of literacy and numeracy skills
- Welsh language and culture
- Health and Safety
- Manual handling
- Digital skills.



## Benefits of Jobs Growth Wales+

- Try out jobs you might be interested in through work trials and placements
- Get paid with weekly training allowances whilst learning and a real wage when employed
- Receive ongoing advice, guidance, and one-to-one coaching to help you achieve your goals
- Build your confidence as you grow your skills and experience
- Train and gain recognised qualifications to boost your career options
- Get a foot in the door and access to jobs with local employers

**JGWPlus@cambria.ac.uk**  
**Yale 01978 267765**  
**Deeside 01978 267472**

**TAP OR CLICK HERE**



for more  
information  
or to apply

## JAYDEN EDWARDS

Jobs Growth Wales +

“After finishing school, I wasn’t sure what to do next, so I visited Careers Wales. They recommended the Jobs Growth Wales+ programme, which sounded like a great opportunity. While on the course, I learnt valuable skills like communication, confidence, and improved my maths and English. It really helped me prepare for the future. Joining the programme was one of my best decisions - it gave me the confidence to try new things. Now, I’m studying painting and decorating at Coleg Cambria.”



# HEAR FROM OUR STUDENTS...



## ETHAN ROBERTS

Level 3 Performing Arts

“Coleg Cambria provided me with a fresh start in a new environment, a heightened sense of independence, a more extensive and in depth education of choice and the opportunity to meet new people.

“After finishing my final year, my ambition is to attend a University for the Dramatic Arts and form a secure career out of Acting.

“The course here at Cambria has set me on my way, for this I will always be thankful.”

## AYANDA PARKIES

Level 3 Engineering

“I chose to study at Coleg Cambria Deeside because they had the course that would allow me to have the options to progress in my desired career within engineering. This year I was able to go into depth on the electrical side of engineering with the help of Further Maths, Further Electrical Principles, Projects, Programmable Logic Controllers (PLCs) and Industrial Maintenance. This has helped with giving me the baseline I'll need within work such as fault finding, understanding PLC programming as well as problem solving using Maths in everyday work life.”





## SIENNA STRAPP

Level 3 Extended Diploma in Sport & Coaching

**“I was studying A Levels at Deeside Sixth for a year and then decided to swap onto the Extended Diploma in Sport and Coaching, as sport was something I really enjoyed.**

**“I am looking forward to embarking on a career within the sports industry. The experience I received from studying on this course will help me in the future and I’m really thankful for that.”**

## RHYS PINDER

Level 3 Agriculture

**“Coleg Cambria has a strong reputation in agriculture and has excellent facilities at Llysfasi. The course offered the perfect balance between practical experience and classroom learning, and the staff were always supportive and knowledgeable.**

**“I gained a wide range of skills in livestock management, genetics, machinery and farming as a business. The training gave me the knowledge and confidence to contribute meaningfully in my current role as a farm worker on a neighbouring pedigree Charolais beef farm, especially in the areas of genetics and herd improvement.”**





# Access to Higher Education (HE)



DEESIDE | YALE

## TAP OR CLICK HERE



for more course info and to apply

## DEGREE LEVEL

courses available in this subject - see page 100

## FROM CAMBRIA TO YOUR CAREER

- Social Work
- Business
- Youth & Community Work
- Nursing/Midwifery
- Teaching
- Health & Social Care

## DID YOU KNOW?

Access to HE courses offer a streamlined route to higher education, condensing what would traditionally take several years into a focused, one-year programme. This intensive approach not only saves time but also prepares students with the skills and confidence needed to thrive in degree-level studies and pursue rewarding careers.

Source: [Accesstohe.ac.uk](https://www.accesstohe.ac.uk)

**At Cambria all our Access to Higher Education (HE) programmes are FREE OF CHARGE. They prepare you to study for a degree and are designed for people who left school/college without the usual qualifications.**

The courses offer a one year route to university level studies leading to a variety of careers and are open to students with substantial life experiences gained since leaving school. Many of our Access to HE students have gone on to succeed at university and pursued new careers that they had never thought possible.

We deliver our courses flexibly, including Access courses where you can attend 4 days a week on site. We also offer blended learning where you attend site 1 day per week and then work remotely in your own time. You can study in a way that suits you!



**SUBSIDISED TRANSPORT PROVISION\* FOR FULL TIME STUDENTS AGED 16-18, LIVING MORE THAN 3 MILES AWAY**

\*subject to eligibility, see page 10 for details



# Beauty, Spa & Complementary Therapies



**TAP OR CLICK HERE**



for more course info and to apply

## APPRENTICESHIPS

available in this subject - see page 54

## FROM CAMBRIA TO YOUR CAREER

- Beauty Therapist
- Salon Manager
- Complementary Therapist
- Makeup Artist

## DID YOU KNOW?

Beauty therapists and makeup artists often find work on cruise ships, allowing them to travel while working. Additionally, there are numerous opportunities in the media sector, including working on film sets, fashion shows, and TV productions, providing a glamorous and dynamic career path for young professionals.

Source: UCAS

DEESIDE | YALE

**Are you creative and a good communicator? Do you want to help others look and feel good about themselves?**

If you are passionate about all things beauty and have a desire to learn new skills, then the beauty industry may be for you. The beauty industry needs people who have great communication skills, are creative, are willing to learn and are passionate about their work.

Our courses will ensure that you have the knowledge and skills to help clients look and feel their very best. You will work with high end product brands in our state-of-the-art commercial salons to develop your skills and build confidence.



**EMPLOYERS WE WORK WITH:**



**Do you receive additional support at school? See page 14**

# Business, Management & Leadership



## TAP OR CLICK HERE



for more course  
info and to apply

## DEGREE LEVEL

courses available in this  
subject - see page 100

## APPRENTICESHIPS

available in this subject -  
see page 54

## LEARN IN WELSH

available in this subject -  
see page 16

## FROM CAMBRIA TO YOUR CAREER

- Marketing Manager
- Event Manager
- Public Relations  
Manager
- Entrepreneur

## DID YOU KNOW?

Roles such as financial  
managers and  
marketing directors can  
earn average salaries  
ranging from £40,000  
to £80,000 per year in  
the UK.

Source: Prospects.ac.uk

## YALE

**Business, Management and Leadership offers diverse, exciting and rewarding career opportunities throughout a wide range of roles across different industries and sectors.**

A career within business, management and leadership will encourage a multiskilled approach, enabling you to be ready for the fast moving modern world. Experienced tutors will teach you the importance of interpersonal skills, teamwork, innovation and the ability to adapt and be adaptable in an ever changing business environment.

We have good links with businesses and you will learn about running your own business, hands-on planning, organisation and management so you can develop the skills and knowledge needed for a successful career.



**EMPLOYERS  
WE WORK  
WITH:**



**SUBSIDISED TRANSPORT PROVISION\* FOR FULL TIME STUDENTS AGED 16-18, LIVING MORE THAN 3 MILES AWAY**

\*subject to eligibility, see page 10 for details

# Childcare, Childhood Studies & Playwork

DEESIDE | YALE

## TAP OR CLICK HERE



for more course info and to apply

## DEGREE LEVEL

courses available in this subject - see page 100

## APPRENTICESHIPS

available in this subject - see page 54

## LEARN IN WELSH

available in this subject - see page 16

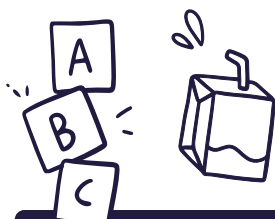
## FROM CAMBRIA TO YOUR CAREER

- Play Practitioner
- Nursery Practitioner
- Psychologist
- Youth Worker

## DID YOU KNOW?

There is a steady demand for childcare workers, with job growth expected to continue.

Source: Prospects.ac.uk



**Have you always wanted to work with children and feel you can make a difference to their lives? A career in childcare and education may be for you.**

The childcare industry is a hugely rewarding and exciting sector to work in. Our courses will ensure you have the specialist skills you need to meet the changing needs of the sector and to work in this field.

Our childcare courses are based around work experience. You will be supported by our expert tutors/ assessors who will work with you to develop your knowledge and skills in caring for children as well as supporting their learning and development.



**EMPLOYERS  
WE WORK  
WITH:**



**Do you receive additional support at school? See page 14**



## TAP OR CLICK HERE



for more course  
info and to apply

## APPRENTICESHIPS

available in this subject -  
see page 54

## FROM CAMBRIA TO YOUR CAREER

- **Contracts Manager**
- **Building Services Engineer**
- **Electrician**
- **Project Manager**
- **Site Supervisor**
- **Heating & Ventilation Engineer**
- **Plumber**

## DID YOU KNOW?

**Demand for plumbers is set to increase over the coming years.**

Source: Checkatrade

**To keep up with the pace of net zero, the demand for electricians is increasing.**

Source: Gov.wales

## Can you see yourself working professionally in the construction industry, or even running your own business one day?

The building services industry is a large employment market and offers a wide variety of opportunities for those wishing to work in domestic, commercial, agricultural and industrial environments.

Develop your skills and knowledge for a successful career in the electrical or plumbing trades at our state-of-the-art facilities.

All learners (with the correct entry requirements) in the Institute of Technology - Building Service Engineering area of study begin on Intermediate courses. At this level students develop the essential knowledge, hands-on skills and trade techniques needed to prepare them for progression to the level of study in their chosen trade at Cambria. Progressing onto the Advanced courses, learners are challenged to undertake more demanding tasks that help prepare them for a successful career in their chosen field.



**EMPLOYERS  
WE WORK  
WITH:**



**SUBSIDISED TRANSPORT PROVISION\* FOR FULL TIME STUDENTS AGED 16-18, LIVING MORE THAN 3 MILES AWAY**

\*subject to eligibility, see page 10 for details

# Construction - Technical

BERSHAM ROAD

## TAP OR CLICK HERE



for more course  
info and to apply

## DEGREE LEVEL

courses available in this  
subject - see page 100

## APPRENTICESHIPS

available in this subject -  
see page 54

## FROM CAMBRIA TO YOUR CAREER

- Architect
- Highways Engineer
- Land & Building Surveyor
- Civil Engineer
- Quantity Surveyor
- Construction Manager
- Project Manager

## DID YOU KNOW?

The average base salary for an Architect in Wales is £40,287 per year and you could choose to specialise in commercial, residential or interior architecture.

Source: Indeed

**The technical construction sector provides a wide range of services including building and civil engineering, highways maintenance, the built environment and design, surveying and site supervision.**

The Construction Diploma is a pathway to apprenticeship which is designed to progress learners into employment, university or onto a full time Level 3 apprenticeship. Over the past few years since its introduction, over 75% of Cambria learners have gained apprenticeships with local and international companies.

The Diploma gives learners the technical, practical and behavioural skills that employers want. A key part of the course is the work experience element which allows learners to put their skills into practice in a working environment.



**EMPLOYERS  
WE WORK  
WITH:**

**ANWYL**  
*thoughtful homes*

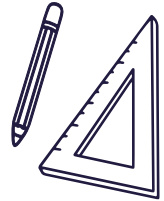
**JONES BROS**  
CIVIL ENGINEERING UK

**WYNNE**  
CONSTRUCTION

**Read**

**Do you receive additional support at school? See page 14**

# Construction - Trades



BERSHAM ROAD | DEESIDE

## TAP OR CLICK HERE



for more course info and to apply

## APPRENTICESHIPS

available in this subject - see page 54

## FROM CAMBRIA TO YOUR CAREER

- Bricklayer
- Bench Joiner
- General Construction Operations
- Civil Engineering
- Painter & Decorator
- Plasterer
- Roofer
- Site Carpenter

## DID YOU KNOW?

Bricklayers can earn anywhere between £17,000 and £40,000 per year depending on experience.

Source: National Careers Service

**The construction industry is one of the largest employment sectors in the UK and can offer high earnings for those skilled in the construction trades.**

The industry offers a huge variety of career opportunities across hundreds of trades. Construction today is a modern industry with digital, design and sustainability focused office careers as well as craft based.

Industry experienced tutors are willing to support you in developing your practical skills and theory using our state-of-the-art facilities at Deeside or Bersham Road which has recently undergone a major £8.5m refurbishment.



**EMPLOYERS WE WORK WITH:**

**ANWYL**  
*thoughtful homes*

**citb**  
Cymru Wales

**wrexham**  
COUNTY BOROUGH COUNCIL  
CYNGOR BERSHAM DEESIDE  
WRECSAM

**CYNGOR Sir y Fflintshire**  
FLINTSHIRE COUNTY COUNCIL



**SUBSIDISED TRANSPORT PROVISION\* FOR FULL TIME STUDENTS AGED 16-18, LIVING MORE THAN 3 MILES AWAY**

\*subject to eligibility, see page 10 for details

# Creative Industries - Art & Design

YALE

## TAP OR CLICK HERE



for more course  
info and to apply

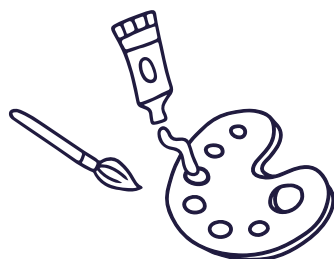
## FROM CAMBRIA TO YOUR CAREER

- **Product Designer**
- **Interior Designer**
- **Architect**
- **Art Director**
- **Visual Artist**
- **Graphic Designer**
- **Animator**
- **Photographer**
- **Fashion Designer**

## DID YOU KNOW?

Students build a robust portfolio showcasing their artistic skills and personal style, essential for securing jobs and freelance opportunities in competitive industries like digital media and publishing.

Source: Indeed



## Are you passionate about art and design and see yourself working in the rapidly growing creative industries?

At Cambria you can study art and design courses at different levels, giving you the opportunity to explore a range of different disciplines, taught by highly qualified and award winning tutors.

You will learn in our specialist art and design facilities such as our photographic studio, design and research studios, printmaking workshop, Mac Suites and 3D workshop, which have been purposely designed to meet the creative needs of our students.

You can explore a variety of art and design disciplines and develop your skills in drawing, painting, textiles, graphics, Computer Aided Design (CAD), photography, printmaking and sculpture to develop and shape your creative abilities.



Do you receive additional support at school? **See page 14**



# Creative Industries - Creative Media Production

**TAP OR CLICK HERE**



for more course  
info and to apply

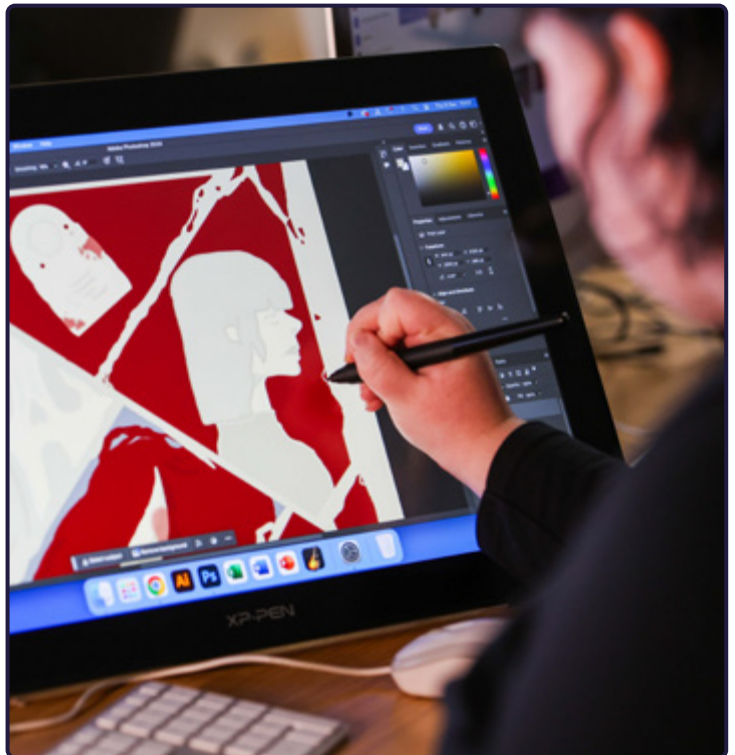
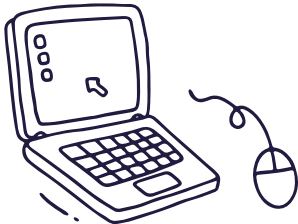
## FROM CAMBRIA TO YOUR CAREER

- Social Media Manager
- Public Relations Officer
- Games Design
- Stage Manager
- TV and Film Producer
- Screenwriter / Copywriter
- Video Editing

## DID YOU KNOW?

Students learn to navigate evolving digital platforms and technologies, preparing them for roles in emerging fields like virtual reality (VR), streaming services, and interactive media production.

Source: Gov.uk



## DEESIDE

In Creative Media Production you will experience and explore the practical and theoretical aspects of contemporary media industries including: film, editing, advertising, print media, journalism, animation, photography, games design, app development and radio broadcasting.

These courses support and encourage you to develop your knowledge, skills and understanding of the media industry and work to fully prepare you for employment within the industry or to study at a higher level.



**SUBSIDISED TRANSPORT PROVISION\* FOR FULL TIME STUDENTS AGED 16-18, LIVING MORE THAN 3 MILES AWAY**

\*subject to eligibility, see page 10 for details

# Creative Industries - Music Performance & Production

DEESIDE | YALE

**TAP OR CLICK HERE**



for more course  
info and to apply

## FROM CAMBRIA TO YOUR CAREER

- Music Producer
- Studio/Sound Engineer
- Songwriter / Composer
- Games Sound Designer
- Professional Musician / Performer
- Session Musician
- Music Teacher
- A&R Representative

## DID YOU KNOW?

Music production courses prepare students for roles as studio engineers, music producers, and sound designers, essential for creating and engineering high-quality recordings across genres and platforms.

Source: Gov.uk



**Music Performance and Music Production** provides students with the opportunity to explore a range of technical skills and specialised theoretical knowledge essential for contemporary music performance and audio production.

### Music Production (Deeside Only)

This course focuses on the technical and creative aspects of music and sound production. You'll learn studio recording, sequencing, sound design for media, and live sound. Projects include recording bands, creating remixes and producing immersive audio experiences. You'll work in industry-standard studios, live sound spaces, and Mac-based labs with the latest production software.

### Music Performance (Yale Only)

This course develops your skills in live performance, songwriting, composition, music theory and band work. You'll take part in regular public performances and use state-of-the-art facilities, including professional performance spaces and Mac suites with the latest notation software.



**Do you receive additional support at school? See page 14**



# Creative Industries - Performing Arts & Backstage Theatre Production



**TAP OR CLICK HERE**



for more course  
info and to apply

## LEARN IN WELSH

available in this subject -  
see page 16

## FROM CAMBRIA TO YOUR CAREER

- Actor
- Choreographer
- Producer
- Stage Manager
- Dancer
- Artistic Director
- Sound Designer
- Theatre Technician

## DID YOU KNOW?

The UK performing arts scene offers a wealth of exciting opportunities for school leavers. For instance, the UK produces more new writing for theatre than anywhere else in the world, providing numerous opportunities to get involved in innovative and cutting edge productions.

Source: Gov.uk

YALE

**If you aspire to a career in music, stage or screen then Cambria is the place to study.**

### Performing Arts

Our Performing Arts courses offer classes that include dance, contemporary theatre, devising performance and musical theatre, each contributing to developing and improving performance and equipping you with skills which prepare you for the demands of today's performance industry. As a Performing Arts student you will have the opportunity to showcase your talents in a number of performances in our new industry standard performance space.

### Backstage Theatre Production

This exciting course provides you with the technical skills necessary to support live event productions; from festivals to theatre, conferences to concerts. The course equips you with a range of transferable skills including production design and planning, lighting design and lighting operations, prop making, event and stage management, video and audio production, sound design and production.



**SUBSIDISED TRANSPORT PROVISION\* FOR FULL TIME STUDENTS AGED 16-18, LIVING MORE THAN 3 MILES AWAY**

\*subject to eligibility, see page 10 for details

# Digital Technologies, Computing & IT

DEESIDE | YALE

## TAP OR CLICK HERE



for more course  
info and to apply

## DEGREE LEVEL

courses available in this  
subject - see page 100

## APPRENTICESHIPS

available in this subject -  
see page 54

## FROM CAMBRIA TO YOUR CAREER

- **Software Engineer**
- **App Developer**
- **Games Developer**
- **IT Support**
- **Data Analyst**

## DID YOU KNOW?

The UK tech sector is the number one tech ecosystem in Europe, and the third most valuable in the world - the UK tech sector reached a combined market valuation of \$1.1 trillion in Q1 2024, a landmark achievement for UK tech.

Source: Tech Nation



## Do you have a strong interest in computers and the digital world?

Studying Digital Technologies at Cambria allows you to work with innovative products and cutting edge technology in the fastest growing sector in the world. Our tutors are industry experts, ready to share their experience with you, putting you in the best possible place to make the most of this digital environment.

Having a career in the digital sector is as varied as the area you are going into. As a first line IT Support Technician you might be responsible for dealing with various faults on a daily basis, whereas a Web Designer might work on long term projects with clients to ensure that their needs are totally met. Relevant to a vast amount of industries, from tech to manufacturing to healthcare and more, these courses will give you the vital skills that are needed in the modern workplace.

Whatever your career's chosen focus - cyber security, artificial intelligence, games development, programming, data science, or a huge range of other areas - the Digital Technologies courses at Cambria will give you a firm grounding.



Do you receive additional support at school? **See page 14**



# Engineering - Fabrication & Welding



**TAP OR CLICK HERE**



for more course info and to apply

## DEGREE LEVEL

courses available in this subject - see page 100

## APPRENTICESHIPS

available in this subject - see page 54

## FROM CAMBRIA TO YOUR CAREER

- Welder
- Ironworker
- Pipe Fitter
- Assembler and Fabricator
- Sheet Metal Worker

## DID YOU KNOW?

Welding is constantly in demand across a huge range of industries which can make it a very lucrative career.

Source: Checktrade



**Fabrication and welding allow for metal structures to be made into a range of shapes and sizes and are a huge part of many industries, such as engineering, construction, marine and more.**

Fabrication and Welding at Cambria will allow you to learn skills in specialist workshops taught by industry trained staff.

### Fabrication

Fabrication of metal refers to the building of metal structures. This is done via a variety of processes including cutting, bending, profiling, welding and assembling. Metals such as steel, aluminium and other ferrous and non-ferrous metals are used in the fabrication process.

### Welding

The prepared metal from the fabrication process is then welded together using a range of techniques and procedures. Welding processes often include 'arc', which is a welding technique that uses a power supply in order to create an electric arc between the electrode on the welding rod and the material itself.



**EMPLOYERS WE WORK WITH:**



**SUBSIDISED TRANSPORT PROVISION\* FOR FULL TIME STUDENTS AGED 16-18, LIVING MORE THAN 3 MILES AWAY**

\*subject to eligibility, see page 10 for details



# Engineering - Manufacturing & Maintenance

**TAP OR CLICK HERE**



for more course info and to apply

## DEGREE LEVEL

courses available in this subject - see page 100

## APPRENTICESHIPS

available in this subject - see page 54

## FROM CAMBRIA TO YOUR CAREER

- **Aerospace Engineer**
- **Maintenance Engineer**
- **Manufacturing Engineer**
- **Mechanical Engineer**
- **Electrical Engineer**

## DID YOU KNOW?

Manufacturing workers in Wales earn, on average, 28.3% more than the overall average salary in the region.

Source: Make UK

**BERSHAM ROAD | DEESIDE**

**Our Engineering Centre of Excellence at Deeside and our Engineering Technology Centre at Bersham Road make up the most successful and sector leading training facilities in the UK.**

Cambria has strong links with engineering businesses to allow you to progress your engineering career. You will learn using the latest equipment such as Computer Numerical Control (CNC) machines, robotics, hydraulics, pneumatics and electronic rigs. Depending on your course or apprenticeship, you can learn a variety of mechanical and electrical techniques. These include aerospace engineering, mechanical and electrical maintenance, Computer Aided Design (CAD), mechanical science and electronic and manufacturing engineering.



**EMPLOYERS WE WORK WITH:**



**Do you receive additional support at school? See page 14**



# Engineering - Motor Vehicle

BERSHAM ROAD | DEESIDE

## TAP OR CLICK HERE



for more course info and to apply

## APPRENTICESHIPS

available in this subject - see page 54

## FROM CAMBRIA TO YOUR CAREER

- **Mechanic**
- **Advanced Diagnostics**
- **Motor Vehicle Technician**
- **Motor Sport**
- **Body Repair Specialist**
- **Quality Engineer**
- **Self Employment**

## DID YOU KNOW?

**40,000 new jobs forecast to be created in the automotive sector by 2030.**

Source: Society of Motor Manufacturers and Traders (SMMT)



**Cambria is one of the most successful automotive training centres in the UK, offering vehicle maintenance and repair at all levels including fastfit and hybrid vehicle qualifications.**

Learn using the latest technology and get taught by industry professionals who will help you develop your skills in vehicle service (hybrid and electric), diagnostic training and air conditioning. Depending on your course or apprenticeship you will learn how to diagnose more complex faults and repair major units. You will also learn test and overhaul procedures for engine systems, chassis, transmission and electrical systems.

Learn in our realistic workshop facilities featuring industry standard equipment including valeting bays and diagnostic areas.

Most students progress directly into employment in the industry after college and some students progress to university. Now is the time to join this exciting industry!



**EMPLOYERS WE WORK WITH:**



**SUBSIDISED TRANSPORT PROVISION\* FOR FULL TIME STUDENTS AGED 16-18, LIVING MORE THAN 3 MILES AWAY**

\*subject to eligibility, see page 10 for details

# Esports

DEESIDE



## TAP OR CLICK HERE



for more course  
info and to apply

## FROM CAMBRIA TO YOUR CAREER

- Professional player
- Content Creator / Streamer
- Coach / Analyst
- Caster / Host
- Event organiser
- Team management
- Game Developer / Designer
- Media Related Roles
- Production Crew

## DID YOU KNOW?

The UK Esports sector offers a wide range of career opportunities beyond just gaming. Roles include event management, marketing, coaching, content creation, and game analysis, providing various pathways for students to explore.

Source: BBC Sport

The Esports industry is global, dynamic, exciting and fast growing. Our Esports courses offer you the opportunity to learn about the sector and develop the skills that the industry needs their employees of the future to have. There are a wide range of diverse, exciting and rewarding career opportunities available to you in many organisations locally, nationally and internationally.

You will learn in our brand new, sector leading Esports facilities.

A career within Esports requires you to develop many skills. These skills include leadership, problem solving, strategic thinking, communication, teamwork, and analytical thinking. Your tutors will teach you the skills that will prepare you for the fast moving, dynamic world of Esports and you will have opportunities to practise these skills during your time on the course.



Do you receive additional support at school? **See page 14**

# Fashion Communication, Business and Marketing

**TAP OR CLICK HERE**



for more course info and to apply

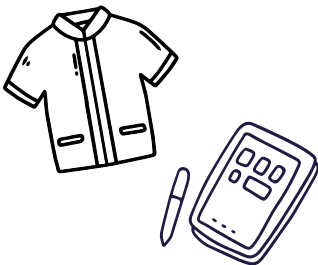
## FROM CAMBRIA TO YOUR CAREER

- Marketing Manager
- Event Manager
- Content Creator
- Influencer
- Entrepreneur
- Retail Manager
- Merchandising Manager
- Food Stylist
- Retail Staging

## DID YOU KNOW?

The fashion industry offers a range of career options, from marketing to fashion journalism to merchandising, providing a versatile career landscape, locally, nationally and internationally.

Source: University of the Arts London



DEESIDE

If you want a career in fashion and retailing our Fashion Communication, Business and Marketing courses offer you the opportunity to learn about the sector and develop the skills that the industry needs their employees of the future to have.

A career within the fashion industry requires you to develop many skills, such as interpersonal skills, creativity, teamwork and innovation. Your tutors will teach you the skills that will prepare you for the fast moving, dynamic world of fashion and you will have opportunities to practise these skills during your time on the course.

Our courses also include links with businesses from the fashion and retail sector, as well as entrepreneurs and fashion influencers.



**SUBSIDISED TRANSPORT PROVISION\* FOR FULL TIME STUDENTS AGED 16-18, LIVING MORE THAN 3 MILES AWAY**

\*subject to eligibility, see page 10 for details

# Floristry

YALE

## TAP OR CLICK HERE



for more course  
info and to apply

## APPRENTICESHIPS

available in this subject -  
see page 54

## FROM CAMBRIA TO YOUR CAREER

- Retail Florist
- Self Employed Florist
- Wedding Florist
- Floral Designer / Florist
- Wholesale Buyer
- Events Florist
- Demonstrator
- Freelance Florist

## DID YOU KNOW?

The floristry industry in the UK is thriving, with over 7,000 businesses generating a combined annual turnover of more than £1 billion.

Source: British Florist Foundation



**A career in Floristry is extremely rewarding as your creative skills become a valuable part of others' special occasions.**

The industry is thriving across the UK with clients seeking a professional and personal touch for their events. Our Floristry tutors are highly skilled experts in their field and our comprehensive courses will enhance your natural creativity, build your business skills and increase your employability in a competitive market.

As part of the course, students will gain hands-on experience working in the student-run floristry shop, offering valuable opportunities to develop skills and knowledge in areas such as international floral design and botany.



**EMPLOYERS  
WE WORK  
WITH:**

**Landex**  
Land Based Colleges  
Aspiring To Excellence

**BLODAU**  
**ial**  
FLOWERS

**Do you receive additional support at school? See page 14**

# Hairdressing & Barbering



DEESIDE | YALE

## TAP OR CLICK HERE



for more course info and to apply

## APPRENTICESHIPS

available in this subject - see page 54

## FROM CAMBRIA TO YOUR CAREER

- Hairdresser
- TV and Media Stylist
- Hairdressing Assessor
- Salon Manager
- Lecturer / Trainer
- Barber

## DID YOU KNOW?

The hair industry is continually evolving with groundbreaking technologies and products. From advanced hair coloring techniques like balayage and ombre to innovative hair treatments using nanotechnology, you'll be at the forefront of beauty and fashion trends.

Source: National Hairdressers' Federation

**Hairdressing courses prepare you to work in one of the most stylish and fashionable industries. If you can see yourself working professionally in this exciting, creative industry then hairdressing may be for you.**

You will learn a range of technical and creative knowledge whilst gaining essential customer service skills in our commercial salon and you will be taught by industry experts in our modern specialist facilities. Within our salons we use industry leading brands such as L'Oréal Professional and Avlon textured and coiled hair care high-end products. We also use the latest equipment to prepare you for entering the workplace.

In addition, you will develop your sales skills to ensure you provide your clients with a first class experience.



## EMPLOYERS WE WORK WITH:



**SUBSIDISED TRANSPORT PROVISION\* FOR FULL TIME STUDENTS AGED 16-18, LIVING MORE THAN 3 MILES AWAY**

\*subject to eligibility, see page 10 for details

## TAP OR CLICK HERE



for more course  
info and to apply

## APPRENTICESHIPS

available in this subject -  
see page 54

## FROM CAMBRIA TO YOUR CAREER

- Nurse
- Midwife
- Children's Nurse
- Health Professional
- Social Worker
- Physiotherapist
- Paramedic
- Teacher

## DID YOU KNOW?

The demand for health  
and social care workers  
is increasing, with a  
predicted need for  
650,000 more care  
workers by 2035.

Source: Gov.uk



If you are a compassionate person and enjoy helping people, a career in the care sector may be for you. The care industry is a hugely rewarding and exciting sector to work in.

Study at Deeside or Yale in our £14m Healthcare and Therapies Academy in simulated wards for a real-life experience.

Experienced tutors will prepare you for work in the Health and Social Care sector. You will study a range of topics to develop and demonstrate your knowledge, skills and understanding within the context of Health and Social Care Services. These topics include principles of care and safe practice, factors affecting individual growth and development, the impact on care and support needs, promoting rights, supporting individuals at risk and working within the health care sector.

There is a significant placement element attached to the higher level course and you will be required to undertake a minimum of 100 hours in a relevant setting.

Level 3 students will achieve a Foundation Diploma in Year 1 and the Extended Diploma in Year 2.



**EMPLOYERS  
WE WORK  
WITH:**



**Do you receive additional support at school? See page 14**



# Hospitality & Catering



YALE

**TAP OR CLICK HERE**



for more course info and to apply

## DEGREE LEVEL

courses available in this subject - see page 100

## APPRENTICESHIPS

available in this subject - see page 54

## FROM CAMBRIA TO YOUR CAREER

- Restaurant Manager
- Food and Drink Manufacturer
- Bar Manager
- Product Developer
- Chef
- Hotel Manager

## DID YOU KNOW?

The hospitality and catering industry in the UK is booming, with over 3.2 million jobs available, ranging from chefs and hotel managers to event planners and caterers.

Source: UK Hospitality

**Are you passionate about food and drink? The hospitality and catering industry is one of the largest, most diverse sectors in the world.**

We have a range of courses to help you progress in this exciting industry that could see you working anywhere in the world.

You will gain practical, 'hands-on' experience in our production iâl Kitchen and Restaurant where lunches and dinners are prepared and served to the public. Cambria was also one of the first ambassadors for the Bronze award in Hospitality & Catering as part of the Wrexham Ambassador Scheme, that is still delivered today.

### The Savoy Kitchen

The Savoy Kitchen is a culinary training centre of excellence for Coleg Cambria's Hospitality and Catering learners in partnership with the renowned Savoy Educational Trust.

Learners gain comprehensive skills in food preparation and culinary expertise ensuring they achieve their career goals and succeed within the highly competitive and rewarding hospitality industry.



**EMPLOYERS WE WORK WITH:**



**SUBSIDISED TRANSPORT PROVISION\* FOR FULL TIME STUDENTS AGED 16-18, LIVING MORE THAN 3 MILES AWAY**

\*subject to eligibility, see page 10 for details

# Independent Living Skills



NORTHOP

## TAP OR CLICK HERE



for more course info and to apply

## FROM CAMBRIA TO YOUR CAREER

- **Independent or Supported Living**
- **Progression to Further Education**
- **Paid, supported or voluntary employment**

## DID YOU KNOW?

**Independent Living Skills courses significantly enhance the quality of life for individuals with physical or mental needs. These courses develop essential skills for managing daily activities, leading to greater self-confidence.**

Source: National Disability Authority

## PLEASE NOTE:

Applications for ILS programmes need to be submitted by the end of April so we can offer learners a thorough and extensive transition into college.

**These courses are suitable for you if you are aged 16-24 and have learning difficulties and/or disabilities and would like to explore and develop skills for life and work.**

Our wide range of Life Skills pathways enable you to develop your personal, social and independence skills whilst improving opportunities for progression to employment and/or further study.

At our Northop site, you will gain real work skills in a range of areas such as animal care, workshop skills, Health and Beauty, car valeting, IT and admin and retail.

Independent Living Skills are taught through practical activities such as cookery, domestic skills, money handling and community access.

Personal Development is taught through sessions in mindfulness, accessible sports and community projects. You may also choose to participate in our Duke of Edinburgh Programme.



**Do you receive additional support at school? See page 14**



# Learn English

DEESIDE

**TAP OR CLICK HERE**



for more course info and to apply

**DID YOU KNOW?**

This course is specifically designed to develop students' skills in all core areas so they can go on to achieve their full potential in Further Education or employment.

If English is not your first language and you are a young adult, we are now offering a full-time course just for you! You will study English for Speakers of Other Languages (ESOL) English qualification, Numeracy for ESOL learners and an employability qualification.

You'll also learn about sustainability and how to protect the environment.

You will be set aspirational goals and a progression plan tailored to meet your needs and have the opportunity to learn about different vocations in preparation for moving forward to a bright future.



**SUBSIDISED TRANSPORT PROVISION\* FOR FULL TIME STUDENTS AGED 16-18, LIVING MORE THAN 3 MILES AWAY**

\*subject to eligibility, see page 10 for details

# Neurodiverse-centred Courses

DEESIDE | NORTHOP | YALE

## TAP OR CLICK HERE



for more course info and to apply

## DID YOU KNOW?

Many neurodiverse individuals exhibit exceptional creativity and innovation, often thinking outside the box and offering unique solutions to complex problems.

Source: Gov.uk

**Are you neurodiverse and looking for a course that can cater to your unique learning needs? Look no further! Our neurodiverse-centred courses are specifically designed to enable individuals with social communication conditions such as Autism to succeed academically.**

Our experienced teaching staff incorporate highly engaging techniques and strategies that are tailored to individual learning styles. Whether you prefer visual aids, hands-on activities or auditory stimulation, we have got you covered! Our courses are inclusive and understanding of diverse learning needs. Our instructors take the time to make sure everyone is comfortable and gets the most out of each session.

## PLEASE NOTE:

These courses are designed to meet the needs and abilities of school leavers who would struggle to access college through the traditional mainstream route.

Entry requirements may differ to those on page 05 - please speak to a member of staff who will confirm with you.

**0300 30 30 007**  
**studentservices@**  
**cambria.ac.uk**



**Do you receive additional support at school? See page 14**

# Science - Forensic & Criminal Investigation



**TAP OR CLICK HERE**



for more course info and to apply

## FROM CAMBRIA TO YOUR CAREER

- University
- Analytical Chemist
- Biomedical Scientist
- Scene of Crime Officer
- Forensic Scientist
- Ballistics Analyst
- Forensic Radiographer
- Pathology Technician
- DNA Analyst
- Toxicologist

## DID YOU KNOW?

The demand for forensic scientists in the UK is growing due to advancements in technology and the increasing complexity of crime. The Forensic Science Regulator highlights a need for more trained professionals to ensure high-quality forensic services in the criminal justice system.

Source: Prospects.ac.uk

YALE

**If you are looking for an exciting career in a scientific role within the fields of forensics and criminal investigation then this is the course for you.**

A career within this industry allows those who love science, are methodical and enjoy problem solving, to use a variety of scientific techniques to help solve legal disputes and prove the guilt or innocence of suspects of crimes.

The course looks at how evidence can be gathered, analysed and shared in order to make informed decisions and solve problems.

Students will also be supported by Wrexham University and will take part in project placements as well as being taught concepts by industry experts.



**SUBSIDISED TRANSPORT PROVISION\* FOR FULL TIME STUDENTS AGED 16-18, LIVING MORE THAN 3 MILES AWAY**

\*subject to eligibility, see page 10 for details



## TAP OR CLICK HERE



for more course  
info and to apply

## DEGREE LEVEL

courses available in this  
subject - see page 100

## LEARN IN WELSH

available in this subject -  
see page 16

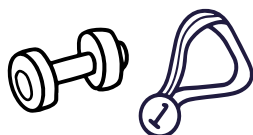
## FROM CAMBRIA TO YOUR CAREER

- PE Teacher
- Fitness Instructor
- Sports Coach
- Sport Therapy

## DID YOU KNOW?

The sports industry  
is expanding, with  
increasing demand  
for professionals in  
coaching, fitness  
training, and sports  
medicine.

Source: Office for National Statistics



If you are serious about sport then a course at Cambria is right for you. Our courses will give you an excellent insight into the professional sporting industry.

Wherever you see your future in the sports industry, we have the right course for you. Our courses will ensure that you develop the variety of skills and knowledge fundamental to successful progression in this exciting and rewarding area of work.

You will gain transferable skills to utilise in your future career. You will have access to some of the best facilities in Wales including the North Wales Indoor Athletics Centre (NWIAC), Lifestyle Fitness gym, sports hall, spin studio and stadium including the track. The new facilities at Yale also include a brand new gym, dance studio, sports hall and spin studio.



**EMPLOYERS  
WE WORK  
WITH:**



**Do you receive additional support at school? See page 14**

## TAP OR CLICK HERE



for more course info and to apply

## DID YOU KNOW?

**Step into Cambria equips learners with practical skills and competencies that are directly applicable to the workplace, enhancing employability and readiness for entry level positions.**



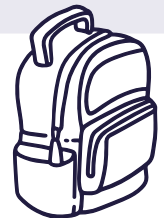
**Step into Cambria is a transition year course that is designed to help you overcome your barriers to learning. During the course, you will develop the skills needed for the next steps in your learning journey, whether that be on to a higher level course, Jobs Growth Wales+ programme or entering the workplace.**

The course is designed to encourage learning outside of the classroom to help develop softer skills such as confidence, communication and teamwork. These will be realised through achieving recognised qualifications that will help you to succeed and progress. In addition, you will benefit from specially allocated classrooms, learning support in every session and dedicated Maths and English tutors.

In the final term, supported tasters will be offered in different vocational areas to help you decide on your sector of interest.

If you answer yes to some of these statements below then Step into Cambria could be the right course for you:

- **Not attended a mainstream school setting**
- **Been homeschooled**
- **Not sat any exams**
- **Have very low-grade GCSEs**
- **Need support with Maths and English**
- **Struggle with anxiety and mental health**
- **Missed a lot of your education**
- **Struggle with busy classrooms**
- **Unfocused on a career path**



**SUBSIDISED TRANSPORT PROVISION\* FOR FULL TIME STUDENTS AGED 16-18, LIVING MORE THAN 3 MILES AWAY**

\*subject to eligibility, see page 10 for details

# Travel & The Visitor Economy

YALE

## TAP OR CLICK HERE



for more course info and to apply

## DEGREE LEVEL

courses available in this subject - see page 100

## FROM CAMBRIA TO YOUR CAREER

- Travel Agent
- Cabin Crew
- Attraction Manager
- Hotel Manager
- Overseas Resort Rep
- Events Manager
- Tour Guide

## DID YOU KNOW?

The travel and tourism industry is growing fast and supports 3.8 million jobs in the UK.

Source: ABTA



**EMPLOYERS  
WE WORK  
WITH:**



LEONARDO  
Hotels

Do you receive additional support at school? **See page 14**



# Uniformed Public Services

DEESIDE | YALE

## TAP OR CLICK HERE



for more course info and to apply

## DEGREE LEVEL

courses available in this subject - see page 100

## LEARN IN WELSH

available in this subject - see page 16

## FROM CAMBRIA TO YOUR CAREER

- Armed Forces
- Ambulance Service
- Border Force
- Prison Service
- Fire Service

## DID YOU KNOW?

There are numerous opportunities for career progression and specialisation, including roles in counter-terrorism, forensics, and leadership positions within the services.

Source: Prospects.ac.uk

**Whatever your ambitions, Uniformed Public Services at Cambria can get you on the right track to a rewarding career doing a job you love to ensure that you fulfil your potential.**

From Entry Level to university level, you will have the opportunity to develop the skills and knowledge required to find your place in the Uniformed Public Services. Our tutors have vast experience with the Armed Forces, Police and the Criminal Justice sector. We have excellent links to the fire service, local police forces, probation, HM prisons and paramedic services. These links help ensure that you experience the full range of the uniformed public service sector.



**EMPLOYERS WE WORK WITH:**



**SUBSIDISED TRANSPORT PROVISION\* FOR FULL TIME STUDENTS AGED 16-18, LIVING MORE THAN 3 MILES AWAY**

\*subject to eligibility, see page 10 for details



# LAND-BASED COURSES INSPIRING SUCCESS



# WELCOME TO LAND-BASED COURSES AT LLYSFASI

At Llysfasi, we are industry leaders in land-based education. The site sits in the beautiful North Wales countryside which lends itself as the perfect classroom for your land-based studies.

Located in Ruthin, the site is easily accessed from across North and Mid Wales, as well as Cheshire, Wirral and Shropshire. Our partnerships with leading regional, national and global companies ensure our training and resources are outstanding and meet the needs of modern industry.






Llysfasi has recently undergone an £8 million redevelopment to create the Farming Futures Sustainability Hub. This includes soil laboratories, a demonstration theatre, cafe and learning zones. These facilities help us to fully support our learners and the wider agricultural community as they focus on sustainable farming for the future.

The Hub is equipped to enable industry partners in engineering, forestry and countryside management to demonstrate the latest technology and advances in their industries.

At Llysfasi student success is our priority. Our team of dedicated staff are here to inspire, motivate, challenge and help our learners to maximise their potential, progress to employment or on to Higher Education in the areas of our specialist industries.

## What can you study at Llysfasi?

-  Agricultural Engineering
-  Agriculture
-  Forestry and Countryside Management

Please see course pages for further details.



## LEARN IN WELSH

Courses available through the medium of Welsh or bilingually.

Cymraeg



# OUR SITES & FACILITIES

## LLYSFASI



The College farms 400 hectares in the Vale of Clwyd. Enterprises include sheep, dairy and beef with all students undertaking practical tasks as part of their studies.

### Llysfasi provides:

- 250 pedigree Friesian/Holstein herd
- Links and partnerships with major dealer networks and machinery manufacturers
- Countryside estate and commercial forestry and woodlands
- Extensive fleet of the latest vehicles, tractors, field machinery and equipment
- Purpose built Agricultural Teaching Centre with laboratory facilities
- Industry Standard Engineering workshops
- Forestry and Conservation Workshops
- Two sheep flocks, comprising Welsh Mountain and Abertex Mules
- Suckler herd

### Accommodation at Llysfasi

The accommodation at Llysfasi caters for both male and female full time students and is located on the main site.

The rooms are extremely spacious and of a high quality, with free Wi-Fi available throughout the facility. Each block has kitchen facilities which are equipped with a kettle, toaster, fridge and microwave.

There is also a games room which includes a widescreen television, pool table and table tennis table. Students also have access to the College fitness suite.

For younger residential students, there are hostel wardens in place, providing friendly support to help you through the year. Trips to the cinema, leisure centre and other requested activities are organised by the wardens.

Our on-site Beri outlet provides catering facilities, with hot and cold meals for residential and non-residential students.

TAP OR CLICK HERE



to take a virtual tour of this site





LLYSFASI

**TAP OR CLICK HERE**



for more course info and to apply

**LEARN IN WELSH**

available in this subject - see page 16

**FROM CAMBRIA TO YOUR CAREER**

- **Agricultural Engineer**
- **Design Engineer**
- **Agricultural Contractor**

**DID YOU KNOW?**

**Agricultural Engineering courses equip students with skills to develop innovative solutions for modern farming challenges, such as designing efficient machinery, irrigation systems, and automated farming technologies.**

Source: Prospects.ac.uk

**Our Agricultural Engineering courses are designed to equip you with the skills and knowledge necessary to excel in this ever-advancing industry.**

The state-of-the-art industry standard engineering workshop with the latest machinery and technologies, together with the 400 hectare commercial farm, provide you with the opportunity to gain hands-on experience within a commercial working environment.

Using innovative and up-to-date technology, covering both agricultural and plant machinery, you will develop your skills and experience as machinery operators or mechanics. During your course, you will cover topics such as; precision farming machinery operation, GPS Auto Steering, specialist computer diagnostics, workshop practices, welding and fabrication, electronics, hydraulics, fuel, braking, steering, and suspension systems.

We are the chosen provider for the AGCO Diploma Training Scheme for Massey Ferguson, Fendt and Valtra, as well as the Kubota Diploma Training Scheme.



**EMPLOYERS WE WORK WITH:**



**SUBSIDISED TRANSPORT PROVISION\* FOR FULL TIME STUDENTS AGED 16-18, LIVING MORE THAN 3 MILES AWAY**

\*subject to eligibility, see page 10 for details

# AGCO Diploma Training Scheme

LLYSFASI

**TAP OR CLICK HERE**



for more course info and to apply

**LEARN IN WELSH**

available in this subject - see page 16



**We have partnered with AGCO to create the AGCO Diploma Training Scheme. This industry approved training is designed to allow young agricultural engineers to progress into positions within AGCO dealerships across the UK.**

This qualification covers all of the skills, knowledge and understanding required in the agricultural engineering industry. You will study a wide range of areas that include health and safety, calculations for service engineering and workshop processes.

You will learn how to repair engines, vehicle systems, electric and hydraulic systems, test electronic systems, mechanical power transmission systems, synchromesh transmissions and clutches, powershift transmissions and hydrostatic or hydromechanical (CVT) transmissions.

You will also learn how to repair cultivation or drilling machinery, application machinery, forage harvesting machinery and combinable or root crop harvesting machinery. You will enjoy hands-on experience using the latest machinery from Massey Ferguson, Fendt and Valtra, gaining skills and knowledge in the repair of the latest advances in technology used in agriculture and agricultural engineering applications.

The AGCO Diploma Training Scheme is an opportunity to “earn while you learn”. You will gain fantastic hands-on practical skills through a manufacturer backed scheme and achieve a range of qualifications as part of your learning programme including:

- **Level 3 Advanced Technical Extended Diploma in Agriculture Engineering**
- **Essential Skills in Numeracy, Literacy and IT**
- **Additional qualifications ie. telescopic handler, abrasive wheels and welding, etc.**

Successful completion of the course can lead to permanent employment within one of AGCO’s dealerships across the UK in areas such as agricultural engineering, field service engineering, workshop technicians, marketing and sales.

**WORKING IN PARTNERSHIP WITH:**



**Do you receive additional support at school? See page 14**

# Kubota Diploma Training Scheme

LLYSFASI

TAP OR CLICK HERE



for more course info and to apply

LEARN IN WELSH

available in this subject - see page 16



**Kubota is a global engineering manufacturing company specialising in agricultural and construction plant engineering and ground care. Kubota employs more than 40,000 people globally and has a worldwide network in more than 110 countries.**

The Kubota Diploma Scheme is a partnership between industry leader, Kubota and Coleg Cambria Llysfasi's agricultural engineering education specialists. This industry approved training content is designed to allow young agricultural engineers to progress into positions within Kubota dealerships across the UK.

The Kubota Diploma Scheme is an opportunity to be part of the future of agricultural engineering and "earn while you learn". By successfully completing the diploma, you will achieve an industry approved qualification at the same time as gaining fantastic hands-on practical skills through a manufacturer-backed scheme and earning a wage.

You will receive a range of qualifications as part of your learning programme including:

- **Level 3 Advanced Technical Extended Diploma in Agriculture Engineering**
- **Agricultural Engineering Skills Challenge Baccalaureate**
- **Essential Skills in Numeracy, Literacy and IT**
- **Additional qualifications ie. telescopic handler, abrasive wheels and welding, etc**

EMPLOYERS  
WE WORK  
WITH:




Landex  
Land Based Colleges  
Aspiring To Excellence



**SUBSIDISED TRANSPORT PROVISION\* FOR FULL TIME STUDENTS AGED 16-18, LIVING MORE THAN 3 MILES AWAY**

\*subject to eligibility, see page 10 for details

# Agriculture & Precision Agriculture

LLYSFASI

## TAP OR CLICK HERE



for more course info and to apply

## DEGREE LEVEL

courses available in this subject - see page 100

## APPRENTICESHIPS

available in this subject - see page 54

## LEARN IN WELSH

available in this subject - see page 16

## DID YOU KNOW?

This course prepares students to innovate in agriculture, leveraging precision farming techniques to address global challenges like food security and climate change, and contributing to a more sustainable future.

Source: Prospects.ac.uk

**Our Agriculture programme will inspire you to be successful in gaining the technical skills that are required in the modern agricultural industry.**

Coleg Cambria Llysfasi has been delivering Agriculture courses for over 100 years. As a centre of excellence our facilities are advancing all the time, from the latest in precision machinery and livestock technology, to the physical building resources and data systems.

We can offer the most up-to-date training for all of the key sectors in the UK with dedicated professional, industry trained staff, industry supply chain stakeholders and excellent support which will deliver the best quality education that can be offered in a beautiful part of the country.



## EMPLOYERS WE WORK WITH:



**Do you receive additional support at school? See page 14**



LLYSFASI

**TAP OR CLICK HERE**



for more course info and to apply

**APPRENTICESHIPS**

available in this subject - see page 54

**FROM CAMBRIA TO YOUR CAREER**

- Forester and Woodland Manager
- Tree Surveyor
- Arborist
- Countryside or Wildlife Ranger

**DID YOU KNOW?**

Forestry and countryside management learners can pursue diverse careers in forest management, national park conservation, eco-tourism, and environmental consultancy, offering opportunities to work in both urban and rural settings.

Source: Prospects.ac.uk

**Are you interested in working in the countryside, managing countryside environments, woodlands and forests? Llysfasi has one of the finest practical resources on offer.**

Set in 400 hectares of estate including 50 hectares of dedicated conservation woodlands, commercial forestry plantations and amenity trees, Llysfasi has outstanding flora and fauna with a wide range of natural species, wildlife and vegetation.

We offer a range of countryside programmes for those interested in the arts of rural and country estate management, wildlife conservation, commercial forestry and arboriculture or more domestic careers in tree surgery.

### Tilhill Diploma in Forestry and Woodland Management

Llysfasi has partnered with Tilhill, the largest woodland management company in the UK to create the Tilhill Diploma in Forestry and Woodland Management. The Diploma is split into 2 distinct stages, beginning at Level 3.



**EMPLOYERS WE WORK WITH:**



**SUBSIDISED TRANSPORT PROVISION\* FOR FULL TIME STUDENTS AGED 16-18, LIVING MORE THAN 3 MILES AWAY**

\*subject to eligibility, see page 10 for details

# WELCOME TO NORTHOP

**Come and study in a friendly, supportive and nurturing environment, where your development is given priority. We specialise in Animal Care, Independent Living Skills and Professional Development.**

Your success is our priority. Our team of dedicated staff are here to inspire, motivate, challenge and help you to fulfil your maximum potential, helping you to progress in life, supporting you to move on to your next steps whether that is into employment, further training or university.

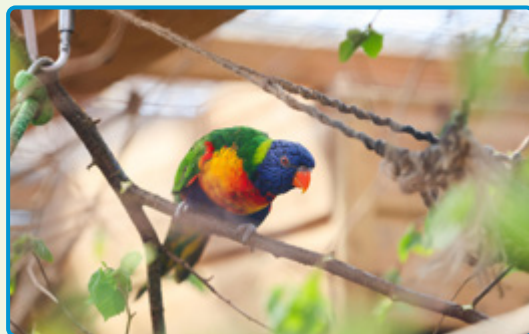
Our beautiful Northop site is set in breathtaking countryside and is located within easy access for North and Mid Wales, as well as Cheshire, Wirral and Shropshire.



## What can you study at Northop?

-  **Animal Care and Management**
-  **Independent Living Skills** (see page 81)
-  **Professional Development**  
visit [www.cambria.ac.uk](http://www.cambria.ac.uk) for details

**Please see course pages for further details.**



## LEARN IN WELSH

Courses available through the medium of Welsh or bilingually.

Cymraeg

# OUR SITES & FACILITIES

## NORTHOP

Set in 90 acres of breathtaking countryside.

### Facilities include:

- Large animal care provision housing over 100 different animal species
- Purpose built small animal care centre
- Farm animal centre
- Stunning countryside estate and ancient woodlands providing unique habitats for a wide range of birds and wildlife
- Links with a wide range of industry partners
- Purpose built Independent Living Skills centre



TAP OR CLICK HERE



to take a virtual tour of this site





### TAP OR CLICK HERE



for more course info and to apply

### DEGREE LEVEL

courses available in this subject - see page 100

### APPRENTICESHIPS

available in this subject - see page 54

### FROM CAMBRIA TO YOUR CAREER

- Zoo Keeper
- Animal Rescue
- Veterinary Assistant

### DID YOU KNOW?

Animal care qualifications have diverse career opportunities in veterinary clinics, zoos, wildlife rehabilitation centres, animal shelters, and research institutions, making a meaningful impact on animal welfare and conservation.

Source: Prospects.ac.uk

**If you are passionate about animals, or have an interest in biological science, then this is the course for you!**

Our Animal Care Centre houses hundreds of animals from a wide range of exciting species to kick start your career with animals. Whether your passion is reptiles, fish, birds, primates, rodents, dogs, wildlife or farm animals, we have it all!

Whilst studying Animal Care, you will experience all aspects of caring for animals and handling techniques, feeding, cleaning, grooming, health checking and monitoring and providing suitable environments. You will learn skills and knowledge in animal behaviour, health and welfare, nutrition, accommodation and biology.

There are opportunities to complete projects and work experience with a number of organisations and local businesses. Trips and guest speakers are planned to bring all your learning to life.



**EMPLOYERS WE WORK WITH:**



**Do you receive additional support at school? See page 14**

# YOUR NEXT STEP WITH CAMBRIA



Access to Higher Education | Degrees | Professional Development | Higher & Degree Apprenticeships | Higher Technical Skills (HTS) | HN Flex



At Cambria University Centre, our career-focused courses are designed with employment in mind to help you gain the skills needed to succeed.

We partner with top UK universities and training providers to offer leading Higher Education in North Wales.



## Our Courses

Access to Higher Education	Agriculture	Animal Care & Management
Business, Management & Leadership	Childcare, Childhood Studies & Playwork	Construction & Building Services
Digital Technologies, Computing & IT	Engineering, Manufacturing & Maintenance	Esports
Health*	Hospitality & Catering	Psychology & Counselling*
Social Sciences & Criminology	Sport & Fitness	Teaching, Assessing & Education

\*subject to validation

## Higher & Degree Apprenticeships

Accounting	Advice & Guidance	Aeronautical Engineering
Catering & Hospitality	Childcare	Construction
Cyber Security	Data Science	Engineering & Manufacturing
Equine	Food Manufacturing	Health & Social Care
Horticulture	Human Resources	Leadership & Management



01978 548 818  
INFO@IALRESTAURANT.CO.UK  
WWW.IALRESTAURANT.CO.UK



@IALRESTAURANT



TAP OR  
CLICK  
HERE  
to book

## CONTEMPORARY RESTAURANT DINING IN WREXHAM

Discover Your New  
Favourite Restaurant



## Prepare to delve into a sanctuary designed to elevate your health and wellbeing at iâl Spa Wrexham



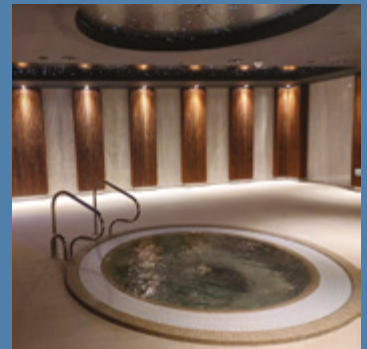
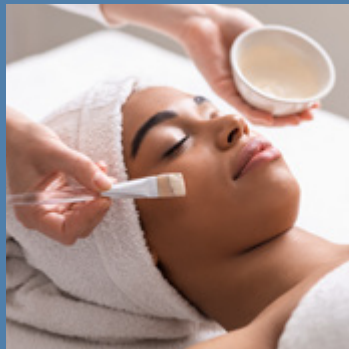
01978 267614  
info@ialspawrexham.co.uk

TAP OR CLICK HERE



to visit the  
website

  Find us on social



**ial**

SALON

# Enjoy a little luxury for your hair

01978 267650 | [www.ialsalon.co.uk](http://www.ialsalon.co.uk)

**TAP OR CLICK HERE**



to visit the  
website

Coleg Cambria Yale  
Grove Park Rd  
Wrexham LL12 7AB

  Find us on social



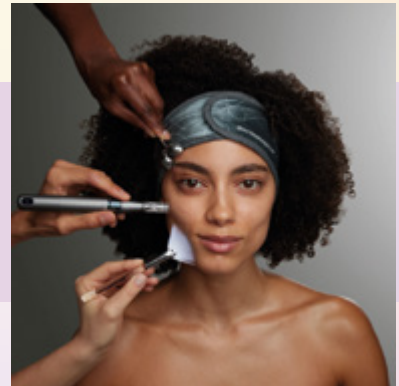
Set in our newly renovated  
Cambria Cosmetology  
Centre, our Cosmetology  
Salon offers a fantastic  
selection of hair and beauty  
treatments

From cuts to a brand new colour, a  
brow shape to a deep tissue massage,  
from head to toe we want you to leave  
feeling great.

For bookings and enquiries,  
please call **01978 267006**  
or email [cosmetology@Cambria.ac.uk](mailto:cosmetology@Cambria.ac.uk)



CANOLFAN GOSMETOLEG  
**CAMBRIA**  
COSMETOLOGY CENTRE



Find us on social

# VIRTUAL SITE TOURS



Don't forget to visit our 360° Virtual Tours to take a look at the buildings and facilities you'll be using when you study with us...

## Deeside Sixth

Our purpose-built A Level centre for students across Flintshire and beyond



## Yale & Yale Sixth

Specialist teaching facilities for both A Levels and a range of Practical courses



## Bersham Road

State-of-the-art Construction and Engineering site in Wrexham



## Deeside

Offering a vast range of Practical courses across all levels of study



## Llysfasi

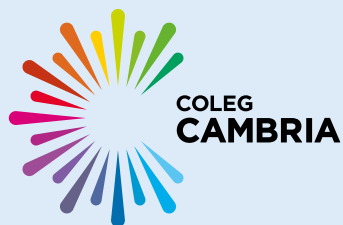
Industry leading site for land-based education, set in beautiful surroundings



## Northop

Home to our animal care provision and Independent Living Skills Centre





## FIND US AT

### 1 Deeside

Kelsterton Road  
Connah's Quay  
Deeside  
Flintshire  
CH5 4BR

### 1 Deeside Sixth

Golftyn Lane  
Connah's Quay  
Deeside  
Flintshire  
CH5 4BH

### 2 Llysfasi

Ruthin Road  
Ruthin  
Denbighshire  
LL15 2LB

### 3 Northop

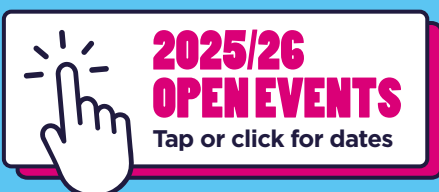
Holywell Road  
Northop  
Flintshire  
CH7 6AA

### 4 Bersham Road

Bersham Road  
Wrexham  
LL13 7UH

### 5 Yale and Yale Sixth

Grove Park Road  
Wrexham  
LL12 7AB



The College is committed to equal opportunities. If you require an alternative format of this publication, please email [marketing@cambria.ac.uk](mailto:marketing@cambria.ac.uk).

This guide is also available in Welsh at receptions and online.  
All details correct at the time of printing.